

Re:Development QUARTERLY



Sivan, Tammuz, Av and Elul 5785
June, July and August 2025
Issue 5

TABLE OF CONTENTS



CONGREGATION BETH SHALOM

5915 Beacon Street • Pittsburgh, PA 15217

www.bethshalompgh.org

412.421.2288

Clergy

Rabbi Seth Adelson Senior Rabbi
Rabbi Mark Asher Goodman Associate Rabbi

Lead Staff

Robert Gleiberman Executive Director
Dale Caprara Controller
Rabbi Larry Freedman J-JEP Director
Hilary Yeckel Director of the ELC
Marissa Tait Director of Youth Programs
Michael Smrek Cemetery Director
Shari Rapowitz Woldenberg Derekh Coordinator

Board of Trustees

Executive Committee

Paul Teplitz President
Alex Kiderman Executive Vice President
Jean Reznick Vice President of Finance
Ira Frank Vice President of Operations
Lidush Goldschmidt Vice President of Member Engagement
Chris Hall Vice President of Synagogue Life
Rabbi Kara Tav Vice President of Youth
Mindy Shreve Treasurer
Alan Himmel Secretary
Alan Kopelow Immediate Past President

Trustees & Auxiliary Representatives

Shoshanna Barnett	Jaclyn Moldovan
Rachel Fauber	Connie Pollack
Karen Gal-Or	Mark Sindler
Robert Russman-Halperin	Ken Steinberg
Joe Jolson	Diane Silberg, Sisterhood Rep.
Judy Kornblith Kobell	Roger Zimmerman, Men's Club Rep.
Marjorie Manne	Daphne Macedonia, USY President
Elisa Marlin	

Past Presidents from 1980-2023

Harriet N. Kruman	Judy Kornblith Kobell
Alan Greenwald (z"l)	Jay L. Fingeret
Marianne Silberman (z"l)	Steven H. Schwartz
Milton Eisner (z"l)	Ira M. Frank
Arnold H. Lazarus (z"l)	Connie Pollack
Yale Rosenstein (z"l)	Stefi L. Kirschner
Dr. David Rosenbloom (z"l)	Howard Valinsky
Harvey Robins	David Horvitz
Julian Elbling	Debby Firestone
Barry J. Palkovitz	Alan Kopelow

Emeriti and Scholars

Rabbi Mark N. Staitman Rabbinic Scholar
Stephen E. Steindel, D.D. Rabbi Emeritus
Moshe Taubé (z"l) Cantor Emeritus
Amir Pilch F.S.A. Executive Director Emeritus
Fern S. Moscov..... Preschool Director Emeritus

Development Committee's Message	3
Member Spotlight	4
President's Message	6
Life & Legacy	8
New Members	9
Contributions	10
Yahrzeit Donations	12
Sponsorships	15
Endowments and Funds	17
Staff	19

Host Your Event at Beth Shalom

CELEBRATIONS INCLUDE:

Anniversaries

Baby Namings

Benei Mitzvah Parties

Birthday Parties

Bridal Showers

Weddings



Contact Shayna Yanoff,
Events & Catering Coordinator at
412-849-2937 or syanoff@eedgecatering.com

A Message from our Development Department

Welcome to the Summer 2025 edition of Re: Development Quarterly! For some of you, this Beth Shalom newsletter will look very familiar, but perhaps others may be reading it for the first time now in 2025. During the past year, we have streamlined our communications in general and the Mishpachtenu in particular. This publication now appears four times a year, and the latter twice a year, in time for Passover and for the High Holy Days specifically.

In this edition, our readers will find a feature interview with Brooke Barker and Boaz Frankel, who moved to Pittsburgh in part because of a visit to Beth Shalom and who shared their personal journeys into our community in recent years. They emphasized how the kind of organic community engagement that drew them to Squirrel Hill has deepened their ties to Beth Shalom as they have become ELC parents since this winter. In addition to photos of them and their infant son Aviv, we have included QR codes that link to profiles of them not just in the "Humans of Beth Shalom" feature for our Fall 2021 edition of Mishpachtenu but also in Pittsburgh Magazine (entitled 'What Brought These Weird Wanderers to Pittsburgh?')

Other features of Re: Development Quarterly will look familiar to regular readers of the old Mishpachtenu. The section entitled "Our Congregational Family" will list all donations made to various congregational funds, in this edition specifically between February 1, 2025, and April 30, 2025. Donations are often made in memory of loved ones or in honor of special occasions, and in this publication we report on contributions to many of our named funds as well as to our Cemetery, Derekh (programs for community engagement), our General Fund, specific funds for annual programming at Beth Shalom, and our rabbis' discretionary funds, among others. Many of these gifts to our congregation mark events such as anniversaries, births and baby-naming ceremonies, Bar/Bat Mitzvah celebrations, birthdays, bridal showers, weddings and yahrzeits.

Most of all, we hope that the Re: Development Quarterly illustrates why and how our Beth Shalom members have invested so much of themselves and their lives in our congregation that it feels like a second home to so many of us. We welcome any feedback you wish to share with us so that we can continue to showcase all that makes Beth Shalom so special.

Buy Giant Eagle Gift Cards at Beth Shalom!



Simplify your shopping and buy Giant Eagle Gift Cards from Beth Shalom and take care of all of your **groceries, pharmacy, and gift giving!** With Giant Eagle Gift Cards, buy various gift cards and earn foodperks and fuelperks!

Call Amira Walker at 412.421.2288 x 110 now!

AirBnB
Apple
Best Buy
Dick's Sporting Goods
DSW
Home Depot
Netflix
Nordstrom
Regal Cinemas
Uber
GetGo! Gas Gift Cards

Over 140 popular stores & restaurants to choose from!

Purchases benefit Beth Shalom.

Help Your Shul...

by wishing our friends a Happy Birthday!

As part of the birthday greetings program, you can now write one larger check and draw down on your deposit as you send greetings during the year.

PLEASE download the birthday form from our weekly emails or get the form from our office. Thank you!

Spotlight on Members Boaz Frankel and Brooke Barker

Q: How did you find Beth Shalom, what brought you here?

BROOKE: We were living in Amsterdam when we planned a trip to Pittsburgh, and we were trying to figure out which shul we would visit that Shabbat. Somehow we found a super niche blog that rated Pittsburgh kiddushes -- it had a glowing review of the Beth Shalom kiddush. And it also talked about the people, the demographics and the energy.

BOAZ: So we knew there would be egg salad and tuna salad but also that there was a range of ages and that people were friendly. It immediately sounded like a place we'd like to go, and a kiddush we'd want to eat. So we went that Shabbat we were in town, and thought, "yeah, this place is great." When we actually moved here a year later, we signed up as members!

Q: What other features of this neighborhood and city drew you here?

BOAZ: We don't have a car and we don't want a car. So we were looking for a place where we could pick up groceries and go to the library or get a coffee on foot or on a bike. Squirrel Hill seemed like a part of the city where car-free people could make it work, and it just worked out.

Q: Was it easy to meet people when you were new here?

BROOKE: People move in and out of Amsterdam so quickly that it was hard to break into the Dutch community - everyone knows you'll move soon. So when we got to Pittsburgh we threw ourselves into trying to make friends. But it doesn't take as much effort here, and soon we had a group that hung out every Shabbat.

BOAZ: It's such a warm neighborhood, too. I often run into neighbors and shul members and chat with



Brooke and Boaz with their son, Aviv

them on my way to or from Beth Shalom on Shabbat. When Aviv was born, everyone was so kind. We had so many community members over for the bris and all these people were so excited for us. It was so sweet.

BROOKE: We've been so lucky to have hand-me-downs from so many former babies in the Beth Shalom community. Aviv's been chewing on and snuggling with and wearing and shaking all these physical reminders of how quickly we were welcomed and supported by everyone.

BOAZ: Since we don't have a car we walk everywhere and push him in the stroller to the Early Learning Center every morning. But there were some days this winter when it was negative 20, and that's too much even for us. Tammy Hepps lives around the corner and drove us to drop off Aviv those days. And the community shows up for the sad things too.

Two years ago, when I came back from Israel after sitting shiva for my dad, Brooke wasn't in

town but she'd organized this whole schedule of people who'd be hosting me for meals and stopping by every day. People were always checking in and it meant a lot to me.

Q: We hear your gratitude for our community Boaz, and we're curious about how you joined the Beth Shalom board before those major lifecycle events occurred. How did that happen?

BOAZ: I'm a sucker. (laughs) Someone called me and asked and I was bad at saying no. In all seriousness, I was curious about the process. I'd never been on a board before, and other board members encouraged me to give it a go as they wanted to make sure to have representation from different parts of the community. So I thought maybe I could add another perspective, and it was an interesting experience to see just how much it takes to run a shul of this size in a building of this size and the real challenges of having a large, aging facility. You can't just get a normal roofing company to come and fix this roof. It's a big ordeal. And fixing your air conditioning unit is just different when you have to get a giant crane to get things on the roof.

Q: Let's turn to Aviv. What's it like for you as still new-ish ELC parents?

BROOKE: When we come into the building he gets more and more excited with each person he sees, it's his favorite place. He loves Shabbat services too - one of our friends asked me what there is for a baby to do at synagogue, and when I told them he's mostly just held by a lot of different people and then he's surrounded by a group of his favorite tweens they laughed and said, "that would be so funny if it were true." But I'm not joking! It takes a lot of work and a lot of people to make a space like that happen, we feel so lucky.

Q: Do you have any final words about Beth Shalom as your spiritual community?

BOAZ: It has been such a nice place to find community, and people are here for so many different

reasons, whether they're here to daven (pray) or to find social connection or even just to drop their kids off for day care.

BROOKE: It's nice that we don't have to all have the same hobby or be the same age. It's easy to fall out of some groups when things get busy or interests change - when running doesn't fit into your schedule or cage fighting becomes too hard on your knees. But Beth Shalom is a place we can always go and even, if we've been away for a week or two, the community is there.



Interested in reading more about Boaz Frankel and Brooke Barker? Scan QR codes below for the "Humans of Beth Shalom" feature from our Fall Mishpachtenu 2021 edition and an article from Pittsburgh Magazine.



*Mishpachtenu
Fall 2021 Edition*



*Pittsburgh Magazine
Article*

A Message from our President

Where Do We Find Ourselves?

Paul Teplitz

President

pteplitz@me.com



To borrow a phrase—slightly out of context—from Ralph Waldo Emerson's essay *Experience*: "Where do we find ourselves?" It is a question we all ask in different ways, consciously or not, as individuals and as a community. Are we moving forward, backward, or sideways? What must we do to keep progressing—or to avoid losing ground?

This is a moment to pause and reflect: Where are we right now in our journey as a synagogue?

Beth Shalom is facing challenges but is also celebrating meaningful progress. I believe we are entering one of the most exciting eras in our congregation's long and illustrious history.

This past year, we made measurable strides in development and financial stewardship. We secured several important grants: a \$50,000 award to replace one of our two HVAC systems servicing the ballroom, approximately \$32,000 in funding for our Early Learning Center, and another \$45,000 for security improvements. These grants are helping to reduce financial pressure on our operating budget, and we are committed to continuing this momentum. Grants can, and must, play a greater role in supporting our financial health.

I also want to share an exciting update regarding the long-anticipated capital campaign. In October 2022, we were awarded a \$1 million Redevelopment Assistance Capital Program (RACP) grant. At the time, we expected to launch a capital campaign immediately. However, after consulting with Mersky, Jaffe & Associates, the expert firm in nonprofit development who did our feasibility study, we realized that we needed to take essential preparatory steps.

Following their feasibility study, Mersky, Jaffe & Associates recommended reconstituting our Development Committee, which we have done. The current committee, co-chaired by Roger Zimmerman and myself, includes Robert Gleiberman, Mindy Shreve, Helen Feder, Bob Garvin, Debby Firestone, and

Melissa Seldin. Together, we launched the ReDevelopment publication to better communicate how your contributions of wealth, wisdom, and work impact our spiritual home.

In tandem with this, we created a Building Re-Envisioning Task Force to begin shaping a transformational vision for Beth Shalom. A smaller working group has been vetting architectural firms from both within and outside Pennsylvania. After an extensive selection process, we have invited a finalist to present to the Board of Trustees at its upcoming meeting. This firm will lead the creation of a campus-wide masterplan, beginning with an in-depth assessment of how and why we use our current spaces.

Most importantly, this will be a collaborative effort. There will be multiple in-person listening sessions open to the entire congregation, as well as opportunities for you to share feedback via an electronic questionnaire. The firm will incorporate these insights—along with financial considerations—into a compelling, realistic, and inspiring vision for the future of our campus. They will also develop the essential visual materials that will serve as the foundation of our capital campaign.

Our campaign will focus on two primary goals:

1. **Creating a newly envisioned, accessible Beth Shalom**—a spiritual home for today and the future.
2. **Strengthening our endowment**—to ensure our long-term financial sustainability.

At the heart of all this work is philanthropy. Our spiritual home has always been sustained by the generosity of its members—through contributions of work, wisdom, and wealth. Philanthropy is not just about meeting financial goals; it is a reflection of our shared values and vision. Every donation—no matter the amount—helps to ensure that Beth Shalom remains a welcoming and spiritually nourishing home for all who enter our doors. It enables us to teach our children, care for one another, and preserve the richness of our Jewish tradition while planning for the future.

I am energized by what lies ahead. Together, we can shape a bold, inclusive, and inspiring future for Beth Shalom—rooted in tradition, responsive to our present, and ready for generations to come. Beth Shalom is a vibrant community and I look forward to creating its future with you.

CONGREGATION BETH SHALOM
INVITES YOU TO

Save The Date

NOVEMBER

SATURDAY 22 7 PM - 11 PM
2025



As We Honor

RABBI SETH ADELSON
For 10 years of Dedicated Leadership

LEGACY CIRCLE

The Legacy Circle is an opportunity to help Congregation Beth Shalom serve Pittsburghers for generations.



Whatever you cherish most about Jewish life, whether it is the community, the learning, the prayer services, or caring for those in need, by leaving a legacy, you ensure that the things you value are sustained for the future.

The Legacy Circle is a community of people who are committed to sustaining Congregation Beth Shalom and our families. Members of all ages and at all financial levels are participating in our Legacy Circle. The Legacy Circle is for everyone.

The Legacy Circle is a commitment now, provide later planned giving mechanism that gives you control over the course of your life to decide levels of giving that are appropriate for you. Planned giving is any gift, made in lifetime or at death as part of a donor's overall financial and/or estate planning. These include gifts of equity, life insurance, real estate, personal property, or cash, including appreciated securities/stock, real estate, artwork, partnership interests, personal property, a retirement plan, etc.

We hope you will join with us to secure a strong Jewish future by making a legacy gift to Congregation Beth Shalom.

First, if you already have included Beth Shalom in your estate planning, please let us know because we want to be able to thank you and acknowledge your commitment to Beth Shalom's future for generations to come. Second, we would ask you to please complete the simple Declaration of Intent form indicating your commitment to make a legacy gift (available on the website and in paper form) to "officially" become a Legacy Circle member. If desired, you can be a part of Legacy Circle yet you may remain anonymous. The Legacy Circle team is profoundly grateful for the existing and anticipated participation to assure Jewish tomorrows for Beth Shalom.

Want to talk to someone about Legacy Circle? Ask questions and learn more?

Becoming a member of Beth Shalom's Legacy Circle is easy – simply let us know you are thinking about making a legacy gift to the shul through your will, trust, retirement plan, life insurance policy or other option. We are happy to chat with you about creating your Jewish legacy. Please contact Ira Frank at natfabira@juno.com or 412-849-2937, Mindy Shreve at mindyshreve@gmail.com or 412-215-4700 or Robert Gleiberman at rgleiberman@bethshalomphg.org or 412-421-2288 x226.

Why we joined Legacy Circle?



"We hope that Jewish life and Congregation Beth Shalom enjoy continued success in the future. We chose to make a Legacy gift to Beth Shalom to insure its continuing success."

-Jack & Bernice Meyers

"I have made a legacy gift to Beth Shalom to make sure that my 'second home' will be here to care for our community in the future."

-Gail Neft



"Beth Shalom is in my will because it gives to me in so many ways. Belonging to Legacy Circle is the right thing to do... Providing a legacy gift to Beth Shalom also is a wonderful way to honor my parents."

-Dr. Elaine H. Berkowitz



"Synagogue membership is important to sustain all generations (both young and elderly), their families and the community. A legacy gift is my contribution to help to ensure the survival of Congregation Beth Shalom for future generations...."

-Gerald Kobell

"I want future youth to enjoy the sweetness of being at shul. My legacy gift to Beth Shalom will enable this to happen."

-Ira Frank



"My hope and prayer are that this beautiful structure on Beacon Street continue to stand as a Beacon to Conservative Judaism and the Jewish Community in Pittsburgh."

-Bunny Morris

Beth Shalom Welcomes Its Newest Members*

Hannah Bein and Aaron Balleisen
Talía and Justin Berk
Nat Cohen
Joshua Ezer
Raychel and Erik Franey

Phil Marcus
Philip Michaelson
Suzanne Pritzker and Andrew Love
Shelby Schrier and Brett Teplitz
Ron Sobol

**As of May 2025*

Planting the Seeds for Our Future...



Join
Beth Shalom's
Legacy Circle
TODAY!



ELEGANT
— EDGE

CATERING
CO.

**Unforgettable Flavors for
Unforgettable Events**

Check out our website
for up to date info and menus:
eedgecatering.com/menu

Office Phone: 412-385-2332
Email: info@eedgecatering.com



Shabbat Kiddush Sponsorship



We are seeking sponsors
for our Shabbat Kiddushes.
A sponsorship is \$450.



If you are able to sponsor a kiddush,
please contact Ira Frank at 412-849-2937
or natfabira@juno.com.

OUR CONGREGATIONAL FAMILY

Your Contributions

February 1, 2025 — April 30, 2025

Cemetery Donations

In Memory of:

Israel Allan Davis & Helen Klein Davis

Allan Haims

Cemetery Endowment

In Memory of:

Ruth Fineberg

Alan Sharpiro

Melissa Shapiro

General Fund

In Appreciation of:

Rabbi Seth Adelson & Rabbi Mark Goodman

Audrey Glickman

Aliyah while visiting

Rabbi Charles & Sami Shalman

In Honor of:

Hannah Adelson & Aviv Diamant

Barry & Yvonne Stein

Jay Fingeret

Barry & Yvonne Stein

Robin Halpern

Barry & Yvonne Stein

Fred Newman

Barry & Yvonne Stein

Kate Wrenshall

Barry & Yvonne Stein

Jean & Paul Reznick

Barry & Yvonne Stein

Ira Frank

Barry & Yvonne Stein

Elisa Marlin

Myriam Gumerman

Iris Nahemow on birth of great granddaughter

Mindy Shreve

Mazal Tov to:

Jay Fingeret

Mindy Shreve

Iris Nahemow

Richard & Helen Feder

Barry & Yvonne Stein on new granddaughter

Rhoda Judd

In Memory of:

Bruce Yaillen

Sivan Chaban

Dean & Darlene Yellin

Sherwin & Marsha Yoffe

Carol Beth Yoffee

Richard & Helen Feder

Danny & Sharon Greenfield

David & Teddi Horvitz

Scott Leib & Cindy Goodman-Leib

Daniel Kass & Deborah Gillman

Marcie & Hank Katzen

Mindy Shreve

David Slesnick & Gerri Sperling

Claire Weinbaum

Lawrence & Eileen Paper

David Slesnick & Gerri Sperling

Joseph Sawdai

Sheldon & Elaine Catz

Albert & Karen Sawdai

Lil Taper

Sanford & Elinor Zaremborg

Mina Baran Rosenberg

Richard & Helen Feder

Mindy Shreve

Rochelle Blumenfeld

Judy Blumenfeld

Samuel & Dorothy Greenfield

Jan & Frances Irvin

Donald & Joyce Kaiserman

Stanley Kirshenbaum & Diane Silberg

Stephen & Erica Miller

Harvey & Susan Sideman

Shelly Blumenfeld

Gail Bayer

Ruth Fineberg

Samuel & Dorothy Greenfield

Rhoda Judd

Florita Sonnenklar

Tamara Skirball

Alan & Fern Steckel

Toni Linder

Richard & Helen Feder

Lawrence & Eileen Paper

High Holiday Donations

In Honor of:

Skip Grinberg

Tammy Hepps

In Memory of:

Sasha Abovyan's mother

Clarice Katz

Israel Experience

Scholarship Fund

In Honor of:

Lourdes Mestre

Julianna Mestre

J. Leonard Frank Early

Minyan Endowment Fund

Mazal Tov to:

Yvonne and Barry Stein on your new granddaughter

Sanford & Elinor Zaremborg

In Memory of:

Carol Beth Yoffee

Judith Kline

Sanford & Elinor Zaremborg

Rochelle Blumenfeld

Sanford & Elinor Zaremborg

Toni Linder

Judith Kline

Judaica Museum Fund

In Memory of:

Richard Judd

Alan & Patricia Barnett

Your Contributions

February 1, 2025 — April 30, 2025

Kiddush Donations

In Appreciation of:

The warm welcome received while attending Shabbos services.

Philip Michaelson

Men's Club Donations

In Memory of:

Bruce Yaillen

Cheryl Light

Morning Minyan Fund

Mazal Tov to:

Jay Fingeret

Jay & Jessie Stein

In Memory of:

Bruce Yaillen

Cheryl Light

Carol Beth Yoffee

Adam Kolko & Eydie Moses-Kolko

Preschool Donations

Mazal Tov to:

Kate Wrenshall

Steven & Lois Lewis

In Memory of:

Toni Linder

Daniel & Neila Bendas

Rabbi Adelson

Discretionary Fund

In Appreciation of:

Rabbi Seth Adelson

Martha Banwell

Larry & Sharon Dobkin

Iris Nahemow

In Honor of:

Rabbi Seth Adelson

Alex & Rachel Friedman

Mazal Tov to:

Iris Nahemow

Richard & Shari Sweet

In Memory of:

Harriet Michaelson

Philip Michaelson

Carol Beth Yoffee

Elisa Marlin

Ilia & Jennifer Murtazashvili

Steven & Sharon Schwartz

Nancy Zionts and Family

Herbert Mandel & Arthur William Mandel

Clifford & Rosanne Levine

Rochelle Blumenfeld

Nancy Zionts and Family

Shelley Blumenfeld

Howard Elbling

Rabbi Goodman

Discretionary Fund

In Memory of:

Aviva Katz

Daniel Weiner

Samuel & Mollie Zytnick

Endowment Fund

In Memory of:

Carol Beth Yoffee

Howard & Nicole Valinsky

Diane Cohen

Howard & Nicole Valinsky

Mina Baran Rosenberg

Howard & Nicole Valinsky

Sisterhood Donations

In Honor of:

Elaine Catz & Elisa Marlin

Roy & Rebecca Jacobson

In Memory of:

Carol Beth Yoffee

Barry & Yvonne Stein

Volunteer Awards Brunch 2025

In Appreciation of:

Aviv Diamant & Jay Fingeret

Richard & Sue Altman

In Honor of:

Fred Newman

Judith & Edward Green

Youth Fund

In Memory of:

Carol Beth Yoffee

Daniel & Neila Bendas

Myriam Gumerman

Gilbert Schneider & Stefi Kirschner

Ruth Anne Lovett

Ruth Weiss

Youth Tefillah Donations

In Memory of:

Carol Beth Yoffee

Larry & Sharon Dobkin

Alan Finkelstein & Lisa Schlar

Kate Kim

Virtual Se'udah Shelishit **(Virtual Third Meal)**

Relax between *Minhah* & *Ma'ariv* each week as Rabbi Adelson leads us in study.

We are asking for volunteers to sponsor the meal. The virtual third meal sponsorship is \$100.



If you are able to sponsor a third meal, please contact Ira Frank at
412-849-2937 or **nattfabira@juno.com**.

OUR CONGREGATIONAL FAMILY

Yahrzeit Donations

February 1, 2025 — April 30, 2025

Barbara Abraham
Lori Abrams
Carl & Honey Adelsheim
Arleen Adelson
Anna Adler
Stephen Alber
Dana & Toby Ascherman
Barbara Azizo
Marsha Azorsky
Donald Backer
Marylyn Baker
Layla Ballon
Judith Bardack
James Beebe
Daniel & Neila Bendas
Joy Berenfield
Arthur & Carla Berg
Velma & Barry Berkey
Elaine Berkowitz
Renee Berlin
Sanford & Patti Berman
Aaron Bernhardt & Barbara Rozen
Shirley & Stanley Bernstein
Sheryl Billman
David Birman
Beth Blumenfeld
Cheryl Blumenfeld
Lawrence Brean
Sue Breslow
Gerda Bretton
Jan & Steve Brody
Marshall Brown
Isabel Chernoff
Martin Childs
Edward & Myra Childs
Lev & Marianna Chudnovsky
Keith Cohen
Harvey Cohen
Paul Cohen
James & Susan Cohen
Gertrude Cohn
Alan & Lynne Colker
Elliot Cook
Polly Craighill
Lois Crone
Rochelle Daniels
Robert & Linda Daniels
Bernice Darnell
Marjorie Davidson
Wilma & George Davis
Rochelle Dueser
Irwin & Linda Ehrenreich
Cookie Elbling
Frank Elbling
Howard Elbling
Julian Elbling
Lois Elbling
Stanton & Betty Elias

H & Eileen Epstein
Arthur & Sybil Epstein
Judy & Louis Epstein
Joseph Epstein
Milton & Shirley Estner
Edward & Kay Farber
Rose Kay Faust & Bernard Browning
Richard & Helen Feder
June Feldstein
Mark Fichman & Ruth Fauman-Fichman
Sheila Fine
Avrum & Linda Fine
Jay & Ilene Fingeret
Michael Fisher
Carolyn Flamm
Richard Fox & Roberta Weissburg
Marsha & Paul Freedman
Debra & Michael Freiser
Judith Friedman
Edward Friedman
Mark Frisch & Shari Woldenberg
Nancy Garber
Ron & Linda Geistman
Joshua Geller
Marlene Gelman
Semyon & Svetlana Geshiktor
Elayne Gilbert
David Ginsberg
Robert & Lesley Ginsburg
Stewart Gisser
Evelyn Glick
Robert & Megan Glimcher
Ronda Goetz
Harold & Debra Goldberg
Bruce Goldberg
Barbara Goldberg
Arthur Goldberg & Renee Ramo
Nancy Golding
Sandra Golding
Lee & Hersha Goldman
Robert Gordon
Meryl Gottlieb
Debbie Gottlieb
Richard Greenberg
Andrew & Sherry Greenberger
Bill & Sally Greene
Samuel & Dorothy Greenfield
Sally (Sarah) Greenwald
Howard & Beth Grill
Jack Gross
Carol Sikov Gross
Myriam Gumerman
Polya Gutman
Ann Haalman
Harold & Judy Haffner
Robin Halpern
Jack & Mimi Halpern
Harry & Chirstine Handmaker

OUR CONGREGATIONAL FAMILY

Yahrzeit Donations

February 1, 2025 — April 30, 2025

Glenn Harlow & E.B. Pepper
Sara Harris
Ronald Hartman & Leslie Golomb
Alan Hartstein
Francine Harvie
Debra Hast
Steven & Lynn Hecht
Margot Helferd
Robert Henderson
Marshall & Eleanor Hershberg
Ted & Anita Heyman
Alan & Laurie Hirschman
Richard Hirshberg
Jill Hoffman
Deborah & William Holcomb
Ronald & Marci Holzer
David & Sheila Holzer
Retta & Lee Horelick
Stanley & Reva Horn
Carol & Jerold Horn
John & Jessie Horton
David & Teddi Horvitz
Mark & Rhonda Horvitz
Morris & Adriane Horvitz
Jacqueline Hyman
Lee & Doreen Israel
Jeanne Iwler
David Izenzon
Anne Jackson
Keith & Marilyn Jacobs
Roy & Rebecca Jacobson
David & Freada Jaffe
Dennis Jett & Lynda Schuster
Judith & Albert Jones
Rhoda Judd
Earl & Barbara Kaiserman
Charles & Susan Kalson
Joan & Sam Kamin
Michael & Janet Kamon
Falk & Judy Kantor
James & Marcia Kaplan
Harvey & Ellen Karch
Naum & Marina Kats
Flora Lee Katz
Clarice Katz
Maury & Ellen Katz
Joan Katz
Gary Katzman
Mindy Keane & Marlene Salus
Brad & Susan Keller
David Kellman
Jack & Ellen Kessler
Alexander & Helen Kiderman
Mikael & Susan Kimelman
Susan Klein
Lois & Charles Klein
Rochelle & Richard Klein
Dennis & Ann-Louise Kleper

Nancy & Joel Kobert
Adam Kolko & Eydie Moses-Kolko
Bonnie Koski
Paul Kotlyar
Judy Kramer
James & Sheri Krell
Naum & Alla Krinberg
Sharon Beigel Kurjan
Michael & Susan Kweller
Joni Lamp
Robert Lang
Sally Lapiduss
Richard & Stephanie Lappen
Racille Lazar
Hillard & Joan Lazarus
Nancy Lazear & Patrick Coyne
Mark & Christy Lebovitz
Robert & Carolyn Lebovitz
Jeffrey & Ilene Lederer
Carol Lederer
Roni Leeman
Jocelyn Lehman
Yaier & Lori Lehrer
Scott Leib & Cindy Goodman-Leib
Adele & Murray Leibowitz
Robert & Sue Lembersky
Pamela & Kenneth Lessans
Mitchell & Rhonda Letwin
Beth Lev
Robert Levine
Steven Levine
Jan & Margaretha Levinson
Stuart & Barbara Levy
Alycia Lieber
Penina Lieber
Jay & Jo-Ann Lieber
Marc & Patricia Liebman
Jack Linder
Yuriy & Malvina Linkov
Michael Litman
Ella Livshin
Howard Louik
Nathan Lovit
Eleanor MacMullin
Alan & Judy Maglin
Anita Mallinger
Jack Malvin
Stewart & Amy Manela
Scott Mann
David Marcovsky
Philip Marcus
Rachel Marcus
Sandra Margolis
Carol & Richard Margolis
Adele & Robert Markovitz
Elisa Marlin
Ellen & James Marmer
Sherri Mayer

Richard & Zipporah Mazer
Daniel & Marina Mednik
Nelson & Debra Mellitz
Mark & Jane Mendlow
Barbara Sachnoff Mendlowitz
Susan & Jack Mennis
Nancy Merenstein
Julianna Mestre
Ryna Meyers
Jack & Bernice Meyers
Ravenna Miller
Sari Miller & Michael Werner
Howard & Abby Milstein
Marsha Mintz
Bunny Morris
Herbert & Arlene Moses
Raisa Mudrenko
Rona Mustin
Iris Nahemow
Hope Nathan
Gail Neft
Carole Neiberg
Lee & Reva Neiman
Daniel Nizhner
Susan Nydes
Fred Orlansky
Janice Ortenberg
Murray Osofsky
Eva Ostrakovna
Todd Palgon
Lawrence & Eileen Paper
Lester & Barbara Parker
Carol Pearlman
Joel & Marcia Platt
Alon Plitt
Helene Pretter
Martha Printz Safyan
Yakov Prizant & Luba Dolinsky
Lisa & Jacky Prucz
Bruce Rabin & Estelle Comay
William & Nancy Rackoff
Isaac & Chava Ratchkauskas
Zelik & Miryam Ratchkauskas
Marilyn Rattner
Barbara & Richard Reisner
David & Sharon Reiss
Paul & Jean Reznick
Alan & Marion Reznick
Harvey & Lorraine Rice
Cynthia Rider
Arnold Robbins
Harry Robins & Robyn Palmer
Ferne Rogow
Ed & Lynn Rose
Ayala Rosen
Richard & Ellaine Rosen
David Rosenblatt
Lary & Debra Rosenbloom

OUR CONGREGATIONAL FAMILY

Yahrzeit Donations

February 1, 2025 — April 30, 2025

Mitchell Rosenfeld
Peter Rosenfeld & Sabina Bilder
Joshua & Susie Rosenstein
Jeffrey & Lynn Rosenthal
Robert & Elizabeth Rosenthal
Alvin Ross & Christine Powers
Myron Roth
Elliot & Martha Rothman
Daniel & Simone Rubin
Ira & Lois Rubin
Zarky Rudavsky & Merrienne Leff
Sandye Rudnitzky
James & Louisa Rudolph
Robert & Wendy Russman-Halperin
Arlene Sablowsky
Marjorie Sachs
Janet & Ritu Sahni
Goldie Samuels
Larry & Adrienne Savitz
Jeffrey & Toby Schaffer
Pamela Schepp
Carl & Roni Schiffman
Stuart Schlansky
Harry & Patty Schneider
Rebecca Schorin
Emanuel Schreiber & Elisheva
Reynolds Schreiber
Robert & Carol Schutte
Judith & Jim Schwank
Howard & Marce Schwartz
Alan & Moira Schwartz
James & Judith Schwartz
Steven & Sharon Schwartz
Eric & Sheila Scott
Frederick Segal
Samuel & Jan Seiavitch
Joel Shapiro
Paul & Karen Shapiro
Herbert & Barbara Shear
Neal & Maria Shenderovich
Rosalyn Sherman
Mark & Vera Sherman
Wendy Sherman
Lois Sherry
Lev Sheynberg
Alexander Shklyar
Mindy Shreve
Margery Freedman Shrinsky
Joel Shrut
Neil & Jennifer Shuman
William & Marian Siegel
Marjorie Silverman
Audrey Silverman
June Silverman
Harold & Roberta Simon
Cynthia & Grant Simon
Mark & Deb Sindler
Elaine Siskind
Josh & Patricia Sivitz

David Slesnick & Gerri Sperling
Sheila Slewett
Joyce Slotnick
Elaine Small
Steve & Susan Small
Norma Smith
Jeffrey Sokol
Gerald & Paula Sokolow
Barry & Arlene Sokolow
Joan Speckin
Jerry & Diane Speer
Dalia Stadlander
Alan & Fern Steckel
Steven & Joann Stein
Jay & Jessy Stein
Nancy Stein
Bernard Stein
Steve & Lanoma Stein
Ted & Stacy Stein
Jeffrey Stein
Barry & Yvonne Stein
Howard Stein & Deborah Swartz
Theodore & Pamela-Rose Stern
Barry Stern
Steven Stoller
Richard & Shari Sweet
Gary & Debra Tabas
Mary Anne Talotta
Shirley Tannenbaum
Ruth Tanur
Judith Taylor
George & Gerry Tessler
Mitchell & Elly Toig
Andrea Tomasic
David & Susan Topolsky
Tamara Tregubenko
Michael Tseytlin & Lyudmila Meskina
Gary & Nancy Tuckfelt
Arthur & Rezeda Udler
Marjorie & Irving Ungar
Margery Unikel
Richard & Julie Urbach
William & Nancy Veshancey
Richard & Suzanne Wagner
Linda Walker
Monroe Wasch
Lawrence Weber & Ellen Mandel
Tedd Wein & Ellen Goldhagen
Sheryl Weinberg
Mark & Bari Weinberger
Jeff & Mindy Weiner
Helene & Stanley Weiner
Milton Weisman
Patricia Weiss
Steven & Elise Weitz
Harold & Nancy Weitz
Charles & Ellen Wilf
Marc Winepol & Simone Karp
Heidi Winkler

Brenda Winsberg
Elizabeth Witschard
Lonnie & Natalie Wolf
Barry Wolk
Bernard & Sandra Wortzman
Alison Wright
Michael & Carol Yahr
Judy Light Yaillen
Carol Yaster & William Levant
Mark Yecies & Ellen Roche
Susan Young
Yevgeniy & Julia Yuger
Polina Yurkovetsky
Sanford & Elinor Zaremborg
Barry & Suzanne Zasloff
Daniel & Susan Zeidner
Joel Zytnick
Allan Zytnick
Sheldon & Susan Zytnick

SISTERHOOD

JUDAICA SHOP



**BY APPOINTMENT
ONLY**

TO SCHEDULE AN APPOINTMENT, CALL
JUDY KOBELL AT 412-725-5566 OR
BARBARA KAISERMAN AT 412-422-5677.

Kiddush Sponsors

February 1, 2025 — April 30, 2025

February 1, 2025

sponsored by **Daniella & Owen Schwartz** in honor of Adele becoming a bat mitzvah.

February 22, 2025

sponsored by **Yvonne & Barry Stein and Larry & Cary Friedman** in honor of their granddaughter Mara Eden Stein's naming.

March 1, 2025

sponsored by **Elaine Friedman**, Benji's grandmother, in honor of Benji becoming a bar mitzvah.

March 8, 2025

sponsored by **The Beth Shalom Sisterhood** in honor of Sisterhood Shabbat.

March 29, 2025

sponsored by **The Beth Shalom Men's Club** in honor of Men's Club Shabbat.

April 12, 2025

sponsored by **Iris Nahemow and Deborah & David Baron** in honor of the naming of their great-granddaughter and granddaughter Sadie Rose.

April 26, 2025

sponsored by The Personal Torah Discussion Group with support from Hadar Community Groups.

Nihum Avelim

(Comforting Mourners)

February 1, 2025 — April 30, 2025

Harold Blumenfeld (Sheryl Riddle) on the passing of his mother Rochelle (Reznik) Blumenfeld on Saturday, January 25, 2025.

Michael, Eric, Max Zack, and Alana Yoffee on the passing of their wife and mother, Carol Beth Yoffee, on Saturday, February 8, 2025.

Jeffrey Linder on the passing of his sister, Toni D. Linder, on Sunday, February 9, 2025.

Avi Baran Munro on the passing of her aunt, Mina Baran Rosenberg, on Monday, March 10, 2025. Mina was the sister of our late member Moshe (Morris) Baran.

Milestones – ***Mazal Tov!***

February 1, 2025 — April 30, 2025

Jeff Finkelstein on celebrating 20 years as the CEO of the Jewish Federation of Greater Pittsburgh.

Neila & Danny Bendas on the birth of a new grandson, Eli Oren Bendas, on Sunday, February 23, 2025. The parents are Alon & Stephanie Bendas and brother is Aden Bendas.

Connie & Ian Pollack on the birth of their granddaughter Sophia Jordan Pollack on Sunday, March 2, 2025. Parents are Andrew & Rebecca Pollack.

Dr. Stanley M. Marks for being honored by Chabad of Squirrel Hill during the Inauguration and Evening of Celebration on Sunday, March 9, 2025

Zoe Wyant and Matt Goldfarb on the birth of their son David Isidore Goldfarb who was born on Sunday, March 9, 2025.

Iris Nahemow, and Deborah & David Baron on the birth of their great-granddaughter and granddaughter Sadie Rose who was born on Friday, March 14, 2025.

Jay Fingeret, Fred Newman, Kate Wrenshall, Robin Halpern, Hannah Adelson and Aviv Diamant on being honored during this year's Volunteer Awards Brunch on Sunday, April 6, 2025.

OUR CONGREGATIONAL FAMILY

Third Meal Sponsors

February 1, 2025 — April 30, 2025

February 1, 2025

sponsored by **Margaret & Gary Fischer** in honor of the yahrzeit of Margaret's father, Reuben Eisenstein.

February 8, 2025

sponsored by **Gil Schneider** in memory of his grandmother Rachel Schneider.

February 15, 2025

sponsored by **Mark & Rhonda Horvitz, David & Teddi Horvitz, and Bruce & Debbie Horvitz** in loving memory of their beloved father and father-in-law Robert Horvitz.

February 22, 2025

sponsored by **The Munro family** in gratitude of the Beth Shalom minyan and in honor of Moshe Baran's first yahrzeit.

March 1, 2025

sponsored by **Huvvy Simon, Freada and David Jaffe, Beth Simon/Josh Ruland, Sam and Kim Simon and Michael and Jami Simon** in memory of both Meyer Simon on his first Yahrzeit and his son Steven Simon.

March 8, 2025

sponsored by **Sharon and Steven Schwartz** to mark the Shloshim of our beloved Ruth Surloff Fineberg of Blessed Memory and to mark the yahrzeit of Rebecca Surloff (Sharon's grandmother).

March 15, 2025

sponsored by **Gil Schneider** in memory of his grandfather Isadore Schneider.

March 22, 2025

sponsored by **Mark & Rhonda Horvitz, David & Teddi Horvitz, and Bruce & Debbie Horvitz** in loving memory of their beloved mother and mother-in-law Esther Horvitz.

March 29, 2025

sponsored by **Ira Frank and Emily Frank** in memory of Audrey Frank, Leonard Frank and dearly departed.

April 5, 2025

sponsored by **Gil Schneider** in memory of his grandmother Rose Schneider.

April 26, 2025

sponsored by **Stan, Michael, Sarah Kirshenbaum and Diane Silberg** in loving memory of parents and grandparents Lil and Jules Silberg.

PLAN FOR YOUR FUTURE NOW

Panoramic view of the Beth Shalom Cemetery from the chapel in 1945

WHAT WE DO FOR YOU

We can help with:

Pre-need planning
Plot Selections
Monument Offerings

We offer to you:

Beth Shalom Cemetery
Beth Shalom Mausoleum
Temple Ohav Shalom Memorial Garden
Homestead Hebrew Cemetery

VISIT OUR CEMETERY

Cemetery Hours of Operations

APRIL - OCTOBER

8:00 A.M. TO 7:00 P.M.

The cemetery is also closed at sundown on Friday through the Sabbath and all Jewish holidays.

For more information, contact
Michael Smrek, Cemetery Director,
at 412.421.2288 x293 (office) or
msmrek@bethshalompgh.org.

OUR CONGREGATIONAL FAMILY

Check out the full list of Congregation Beth Shalom endowment and funds.

You can donate to any ones of these funds.

Donate online at bethshalompgh.org/general-donations

Operations Endowment

Providing long-term support for synagogue operations

Rabbi Adelson Discretionary Fund

Supporting Rabbi Adelson's Philanthropic Ideals

Rabbi Goodman Discretionary Fund

Supporting Rabbi Goodman's Philanthropic Ideals

Mildred & Isadore Berkowitz Memorial Fund

Supporting synagogue operations

Beth Shalom Judaic Museum Fund

Providing funds for Judaic Museum purchases

Bregman Minyan Endowment

Supporting morning minyan social activities

Bunny and Marvin Morris Family Arts Fund

Providing support for art

Cemetery Endowment

Providing cemetery maintenance

Etz Chaim Chumashim Fund

Purchasing of Chumashim

Andrew & Minnie Cohen Operations Fund

Supporting synagogue operations

Reuben A. & Selma W. Cohen Youth Endowment

Supporting Youth Department activities

Harry & Jean Davis Operations Endowment

Supporting synagogue operations

Max Elinoff Youth Scholarship Fund

Supporting Beth Shalom youth welfare

J. Leonard Frank Early Morning Minyan Endowment

Supporting Shabbat and Yom Tov services

Goldberg Endowment Fund

Financing Shabbat & family programs for Religious School (J-JEP)

Lynda Herer Goldsmith Camp Ramah Fund

Funding scholarships for youth members in need

Lillian & Leo Gross Sisterhood Keshet Fund

Underwriting Keshet annual cost

Bernard & Ethel Halpern Young Leadership Award

Paying the expenses associated with the Halpern Young Leadership award

Lillian Halpern JTS Weekend Lectureship Endowment

Bringing Seminary students to Beth Shalom for shabbat weekend

Morris Henderson Yahrzeit Fund

Supporting synagogue operations

Hoffman Library Fund

Establishing and maintaining the Hoffman Library

Israel Experience Scholarship Fund

Funding scholarships for dependent children of Congregants to offset costs for trip to Israel

Allan & Betsy Kanarek Shabbat Alive Endowment

Offering programming for Shabbat Alive events

Joan & Larry Lasday Memorial Education Fund

Assisting deserving youth of Synagogue members

Mark Lasser Memorial Scholarship Fund

Providing an annual scholarship to enable an Israel experience for a member in need

Darrell H. Lazarus Hear O Israel Fund

Providing hearing devices for those who are hearing impaired

Arnold H. Lazarus & Belle G. Lazarus Endowment

Supporting synagogue operations

Arnold H. Lazarus & Belle G. Lazarus Annual Remembrance Fund

Providing funding for annual kiddush honoring Belle and Arnold Lazarus

Bessie & Aaron Maharam Education Endowment

Providing books & other educational materials for preschool

OUR CONGREGATIONAL FAMILY

Ma'ot Hittin Donation Fund

Supporting people in need during Passover

Max Elinoff Fund

Hebrew School Technology Fund

Mazerov Scholarship Endowment

Providing scholarship support for children of
Beth Shalom members

Moscov Scholarship Fund

Providing scholarship support for Preschool students

Preschool Enrichment Fund

Supporting preschool programming

Philanthropic Fund

Supporting charitable causes as defined by the
Philanthropic Committee

Prayer Book Fund

Providing funds to purchase New Prayer Books

Preschool Scholarship Fund

Providing scholarship support for Preschool students

Lynne Robins Memorial Scholarship Endowment

Providing First-time Israel travel support for
young female members

Rose K. & Harry Rosen Confirmation Class Endowment

Financing education programs and activities

Thomas Mordechai and Simcha Rosenstein Memorial Fund

Supporting synagogue operations

Dolores Rubin Prayerbook Fund

Providing funds to purchase New Prayer Books

Schiffman Music Fund

Supporting music programming

Arlene Shapiro Memorial Fund

Supporting synagogue operations

Samuel T. & Jeannette B. Shear Youth Lounge Endowment

Establishing and maintaining youth lounge

Sisterhood Flower Fund

Providing flowers for the Bima & our Rabbis for the
High Holidays

Sisterhood Torah Cover Endowment

Purchasing of Torah Cover in honor of every
Congregation President

Sigel-Mandel-Cohen Scholar in Residence Shulabration Endowment

Supporting Scholar-in-Residence Program

Albert & Anita Smolover Scholarship Fund

Supporting Preschool operations

Pearl & William Stark Humanities Library Fund

Establishing and maintaining the Starks
Humanities Library

Harry Steck Primary Enrichment Endowment Fund

Providing books and other educational materials for
Religious School Enrichment

Taubé Endowment Fund

Supporting synagogue operations

Early Childhood TEACH Fund

Supporting Professional Development of our
Preschool Staff

Wagner-Klein Preschool Playground Fund

Maintaining and replacing Preschool playground
equipment

Alvin and Shirley Weinberg Preschool Scholarship Fund

Providing scholarship support for Preschool students

Carol Beth Yoffee YAD Fund

Providing a YAD to present to every
Benei Mitzvah student

Youth Fund

Supporting youth programming

Zukerman Sukkot Endowment

Providing Sukkot decorations and kiddushes and
Sukkah construction/repair

Zweig Library Fund

Establishing and maintaining the Zweig Library

Samuel & Mollie Zytnick Endowment

Supports synagogue operations

STAFF DIRECTORY

Please reference this directory for professional leadership contact information.

We look forward to speaking with you!

OFFICE HOURS: Monday - Thursday, 9:00 am - 5:00 pm and Friday, 9:00 am - 3:00 pm*
* Staff schedules vary

Clergy & Program Staff



Rabbi Seth Adelson
Senior Rabbi
412.421.2288 x115
rav@bethshalompgh.org



Rabbi Mark Asher Goodman
Associate Rabbi
412.421.2288 x111
mgoodman@bethshalompgh.org



Ashley Burse
Rabbi's Assistant
412.421.2288 x112
aburse@bethshalompgh.org



Rabbi Larry Freedman
Director of J-JEP
412.621.6566 x116
rabbiLF@jjep.org



Stephanie Wolfe
Assistant Director of J-JEP
412.621.6566 x111
jjepad@rodefshalom.org



Hilary Yeckel
Director of the ELC
412.421.2288 x290
hyeckel@bethshalompgh.org



Norah Cauley
Assistant Director of the ELC
412.421.8857 x390
ncauley@bethshalompgh.org



Marissa Tait
Director of Youth Programming
412.421.2288 x463
mtait@bethshalompgh.org



Shari Rapowitz Woldenberg
Derekh Coordinator
412.421.2288 x321
swoldenberg@bethshalompgh.org

Administrative Staff



Robert Gleiberman
Executive Director
412.421.2288 x226
ExecDir@bethshalompgh.org



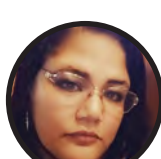
Dale Caprara
Controller
412.421.2288 x109
controller@bethshalompgh.org



Michael Smrek
Cemetery Director
412.421.2288 x293
cemetery@bethshalompgh.org



Kristin Zappone
Marketing & Communications Specialist
412.421.2288 x108
communications@bethshalompgh.org



Tika Bonner
Administrative Assistant
412.421.2288 x114
tbonner@bethshalompgh.org



Amira Walker
Bookkeeper
412.421.2288 x110
awalker@bethshalompgh.org



John Williams
Maintenance Supervisor
412-973-9964
maintenance@bethshalompgh.org



Shayna Yanoff
Events and Catering Coordinator
412-385-2332
syannoff@eedgecatering.com



Paul Teplitz
President

Rabbi Seth Adelson
Senior Rabbi

Rabbi Mark Asher Goodman
Associate Rabbi

Robert Gleiberman
Executive Director