

Mishpachtenu

Adar I, Adar II, Nisan, Iyyar & Sivan 5782

March, April & May 2022

Volume 24 Issue 3



Congregation Beth Shalom
5915 Beacon Street
Pittsburgh, PA 15217
412-421-2288
www.bethshalompgh.org



CONGREGATION BETH SHALOM

5915 Beacon Street • Pittsburgh, PA 15217

www.bethshalompgh.org

412.421.2288

Clergy and Senior Staff

Rabbi Seth Adelson Senior Rabbi
Robert Gleiberman Executive Director
Dale Caprara Controller
Rabbi Andy Shugerman Development Director
Rabbi Mark Goodman .. Interim Director of Derekh & Youth Tefillah
Rabbi Larry Freedman J-JEP Director
Hilary Yeckel Director of the ELC
Marissa Tait Director of Youth Programs

Board of Trustees

Executive Committee

Alan Kopolow President
Paul Teplitz Executive Vice President
Tammy Hepps Secretary
Fred Newman Treasurer
Roger Zimmerman Vice President of Finance
Joseph Jolson Vice President of Operations
Mindy Shreve Vice President of Member Engagement
Jordan Fischbach Vice President of Synagogue Life
Adam Kolko Vice President of Youth
Debby Firestone Immediate Past President

Trustees

| | |
|----------------------|--------------------|
| Ari Chester | Alex Kiderman |
| Ira Frank | Judy Kobell |
| Boaz Frankel | Elisa Recht Marlin |
| Arthur Goldberg | Adam Resnick |
| Deborah Sales Graver | Evan H. Stein |
| Alan Himmel | Lisa Steindel |
| Sandra Hirsch | Pat Weiss |
| Linda Safyan Holber | Erica Fox Zabusky |

Auxiliary Presidents

Ira Frank Men's Club
Judy Kornblith Kobell Sisterhood
Maya Zimmerman USY

Past Presidents

| | |
|--------------------------|--------------------|
| Norton Freedel | Jay L. Fingeret |
| Harriet N. Kruman | Steven H. Schwartz |
| Marianne Silberman (z'l) | Ira M. Frank |
| Yale Rosenstein | Connie Pollack |
| Harvey Robins | Stefi L. Kirschner |
| Julian Elbling | Howard Valinsky |
| Barry J. Palkovitz | David Horvitz |
| Judy Kornblith Kobell | Debby Firestone |

Emeriti and Scholars

Rabbi Mark N. Staitman Rabbinic Scholar
Stephen E. Steindel, D.D. Rabbi Emeritus
Amir Pilch F.S.A. Executive Director Emeritus
Fern S. Moscov Preschool Director Emeritus

| | |
|--|----|
| In the Know | 2 |
| Message from Rabbi Seth Adelson | 3 |
| <i>Esther, the Doe Who Brings the Dawn</i> | |
| Message from Our President | 4 |
| Message from Our Executive Director | 5 |
| Message from Our Development Director | 6 |
| Message from Rabbi Mark Goodman | 7 |
| <i>Walking the Derekh</i> | |
| Message from Our ELC Director | 8 |
| <i>Growing with the ELC</i> | |
| Message from Our J-JEP Director | 9 |
| <i>Learning with J-JEP</i> | |
| Beth Shalom Youth Zone | 10 |
| Countdown to <i>Pesah</i> 5782/2022 | 11 |
| Benei Mitzvah | 16 |
| The Sisterhood Says | 18 |
| The Men's Club | 19 |
| Legacy Circle | 20 |
| Membership | 21 |
| Humans of Beth Shalom | 22 |
| Our Congregational Family | 24 |
| Staff Directory | 34 |

Esther, the Doe Who Brings the Dawn

Rabbi Seth Adelson
Senior Rabbi
rav@bethshalompgh.org



As I write this, some weeks in advance of publication, Pittsburgh is covered in snow and the temperature is in the frigid single digits. We are huddled inside for warmth, even as we slide down the far side of the Omicron wave. This second pandemic-infused winter seems even darker than last year, perhaps because we thought this would be over last summer.

And so I am ogling the spring, with its opportunities for gathering outside and of course the festive holidays that come with the reawakening of the Earth. We are dreaming of Purim costumes, haroset recipes and the cheesecake-laden Torah of Shavuot.

There is a midrashic interpretation of Esther in the Talmud (BT Yoma 29a), that describes her as “*Ayyelet haShahar*,” a term appearing in the incipit to Psalm 22. While commentators disagree about the precise meaning of *Ayyelet haShahar*, the words can be literally translated as “the deer of the dawn.” The Talmud likens Esther to a comely doe who brings light to her people: “Just as the dawn is the conclusion of the entire night, so too, Esther was the conclusion of all miracles,” meaning that Esther’s saving of the Jews of Persia was the final biblical miracle, a metaphorical sunrise for the Jews after a long period of darkness.

While there have been plenty of deer traipsing through my yard in recent weeks, none has apparently brought an end to this long night. We await Purim eagerly, hoping that maybe this variant will have kicked up our immunities high enough as to stave off further waves, so we can enjoy the spring and all of its holidays with abandon. Let Esther bring the dawn; days of light and joy are coming.

Help Your Shul...

by wishing our friends a Happy Birthday!

As part of revamping the birthday greetings, you can now write one larger check and draw down on your deposit as you send greetings during the year.

Look for more improvements soon!

PLEASE download the birthday form from our weekly emails, pick it up in our office or request one to be emailed/mailed to you. When completed, please return it to our office. Thank you!

**Buy Giant Eagle Gift
Cards at Beth Shalom!**



Simplify your shopping and buy Giant Eagle Gift Cards from Beth Shalom and take care of all of your **groceries, pharmacy, and gift giving!** With Giant Eagle Gift Cards, buy various gift cards and earn foodperks and fuelperks!

Amazon.com
Babies 'R' Us
Best Buy
Dick's Sporting Goods
DSW
Home Depot
Marriott Hotels
Nordstrom
Regal Cinemas
Seven Springs Resort
GetGo! Gas Gift Cards

**Over 140 popular
stores and restaurants
to choose from!**

**Purchases benefit
Beth Shalom.**

Call Amira Walker at 412.421.2288 x 110 now!



MY MASK

PROTECTS YOU,

YOUR MASK

PROTECTS ME.



OUR LEADERSHIP

A Message from Our President

Alan Kopolow

President

alankopolow@gmail.com



As the calendar tells us, it is Spring and we are hopeful that we can transition to a new normal. A normal that lets us meet in person more regularly and in a fashion that allows us to feel comfortable to be around each other. As Passover approaches, I am trying to put into perspective how our journey out of Egypt through the desert in ancient times can be compared to the period we continue to go through with respect to our journey through COVID.

Spring and Passover are times of renewal and starting over after the winter. Looking over last year's version of this edition of *Mishpachtenu*, we were hopeful at that time that COVID was on the wane and we would be heading into the summer and the High Holidays with some tangible return to normalcy. That is not so different from the aspirations our forefathers had of reaching the Promised Land as they wandered in the desert. Well, a year has come and gone, and once again we are hopeful that this summer and High Holiday season will return us to a viable form of normalcy after being dealt a new "plague," the omicron variant of the COVID virus.

As a popular modern quip says, "What doesn't kill us, makes us stronger." I must say that Beth Shalom has survived the ravages of the COVID virus and other tests we have been given. It certainly has made us stronger. It has allowed us to demonstrate our resiliency. We have found ways to carry on in spite of the plagues that have been put upon us. We have seen our staff, clergy, lay leadership and volunteers find ways to operate and, in some cases, improve our lot.

Let me take a few moments to enumerate some of the great things we have accomplished despite wandering in the wilderness of the COVID pandemic. These accomplishments have been done while on "Zoom" or in masked, distanced meetings. I may be the first President in Beth Shalom's history to have never met with our Board of Trustees in person. Hopefully that will change soon.

We have continued to offer services both in person and through Zoom every day. Our Rabbi and prayer leaders continued to step up to make sure services were held without exception.

We have found ways to raise much needed funds in increased amounts through appeals that were almost entirely on-line. We have had numerous benei mitzvah in all forms of hybrid variation as well as several "normal" celebrations. Beth Shalom had a very successful "Come Together" event in person albeit widely spaced and masked.

Our ELC continued to operate despite changing protocols with reduced staff and lower than normal enrollment. We look forward to starting Gan Shalom later in the spring following the end of our ELC school year. We secured a number of incredibly helpful grants to help the ELC stay viable. Beth Shalom has raised the salary of its employees and is in the process of offering health benefits. We are trying to live our values with our actions.

Our Board committees have continued to meet and are making progress toward their goals. The Board of Trustees will complete a Leadership Development Training Course through the USCJ which was started in late 2021. We hope to become better leaders as a result. We continue to make progress on the implementation of our Strategic Plan as we approach the end of our third year. Our Derekh classes and activities have continued as close to normal as possible with Rabbi Goodman as interim Director. We are looking to make positive changes to the J-JEP Program and improve Youth Tefillah. We are working toward repairing our building after a long period of deferred maintenance.

We are hiring an assistant Rabbi to partner with Rabbi Adelson to improve our ability to serve our Congregation. Our new Executive Director, Robert Gleiberman, and new Development Director, Rabbi Andy Shugerman, are approaching their respective one-year anniversaries. Both have made large positive impacts on Beth Shalom. Rabbi Adelson and Rabbi Shugerman will be attending the Federation's "Mega Mission" to Israel in June representing Beth Shalom along with about 30 of our members.

Continued on page 19

A Message from our Executive Director

Robert Gleiberman
Executive Director
ExecDir@bethshalompgh.org



Congregational Family Success – It Truly Takes a Village...

Just like with our own families our Beth Shalom family needs the help of many individuals to be able to maintain our very special community. It is amazing to see the personal love and special talents that so many of you share with us. I want to acknowledge and give a hardy Mazal Tov to the many groups that are part and parcel of our success.

Board of Trustees/Executive Committee

Sisterhood

Men's Club

Membership Committee

Development Committee

Religious Services Committee

Racial Justice Committee

Cemetery Committee

COVID-19 Task Force

Finance Committee

ELC & PTO Committees

J-JEP Committee

House Committee

Space Utilization Committee

Security Committee

IT Committee

Derekh/Adult Education Committee

Personnel Committee Constitution

Bylaws Committee

Youth Commission

Kitchen & Catering Committee

And numerous other Sub & Ad Hoc Committees

Would you believe that there are over 250 committed individuals working on the above groups for the betterment of Congregation Beth Shalom? As we go on with our regular routines and busy lives we sometimes take for granted who and what it takes to make everything happen.

Working alongside our many volunteers is also our dedicated Clergy, Senior staff, Administrative staff, Maintenance staff, ELC staff and Teachers as well as J-JEP staff. Our work force truly wants our congregational family to succeed in helping you fulfill your hopes and dreams. We are here to help each and every one of you to get through the good, not so good, joyous and sad times.

My hope is for those who have yet to volunteer for your second home to be inspired by those who have. Please consider stepping up and following in their footsteps. Walk in the path of those who have come before you. If you do, you will be truly amazed how good it makes you feel. You will be filled with a sense of accomplishment and congregational family success.

May God continue to bless all of us with good health, happiness, and success now and in the future.

If you have the desire to get more involved in synagogue life please get in touch with me. I am ready and eager to put you to work. There is no time like the present.

HOST YOUR EVENT AT BETH SHALOM

*Whether inside or outside,
our elegant event spaces can be
configured for any occasion.*

Cheers!



Contact Michelle Vines, Events Coordinator,
at 412.421.2288 x113 or
catering1@bethshalompgh.org

OUR LEADERSHIP

A Message from our Development Director

Rabbi Andy Shugerman
Development Director
RabbiAndy@bethshalompg.org



As I type these words, I am reflecting on the strange but not unpleasant sense of “deja vu” I have had recently that - until today - seemed like a mental hiccup that must come from the seemingly endless cycle of snowfall and shoveling these past several weeks.

Until today, I largely thought this was strange because this is our first Pittsburgh winter, and I did not need to shovel in Brooklyn, as our apartment building’s manager handled that task for all of us tenants.

But today, Erev Shabbat, as I look forward to shoveling as a break from being homebound (again) due to local schools’ closure not from COVID exposure but from snowfall, I have new insight into why this “deja vu” is both strange and increasingly pleasant.

Just shy of a year ago, not long after I finalized the terms of my new position with Beth Shalom, I was asked to submit an article for the Spring 2021 Mishpachtenu to introduce myself and my vision for development in our synagogue community. One of the core texts I cited in that piece is perhaps the most famous in this week’s Torah portion, Terumah: “Make me a sanctuary, and I will dwell amidst them.” (Exodus 25:8) I referred to that verse and some of the ways it has been interpreted in order to offer a window into how I approach my still-new role as our Development Director from my background as a rabbi and educator.

In thinking about that verse today and what we learn about the building of the Mishkan (wilderness sanctuary) in Parashat Terumah, I cherish how much I have learned from our lay and professional leaders here about the history of building and

rebuilding on our property over the past century. Indeed, sharing those stories now plays a major role in our engagement of local elected officials as we seek public grant funding to support much needed capital improvements for the Beth Shalom campus.

And just as the Exodus narrative frames why and how the ancient Israelites built the Mishkan as a mobile sanctuary during their journey through the wilderness, the stories I have been collecting - from the groundbreaking and cornerstone-laying for our Community House in Spring 1922, through the October 1996 fire here and the major rebuilding effort that followed it - have helped us not just to understand our history but to envision projects that will bring Beth Shalom more fully into the 21st Century.

Those potential projects reflect both a set of guiding principles (safety, security, accessibility, sustainability and resilience) and an understanding of the funding landscape from private institutions like the Pittsburgh History & Landmarks Foundation, which is supporting our upcoming repairs to our Sanctuary’s roof and cornices, and from public sources like the Community Investment and Tourism Fund, which provided matching funds for those our leadership raised to install our Solar Roof Project.

Halfway through 5782, I am proud to report that we are in various stages of managing grants worth nearly a half million dollars. Furthermore, our discussions with local elected leaders (County Executive Rich Fitzgerald, State Rep. Dan Frankel, and State Sen. Jay Costa as of today) have all elicited new ideas for projects, partnerships, and potential funding sources to support a revitalization of our synagogue’s physical plant to match its vibrance as the spiritual home and community hub that we know and love.

As we continue this engagement and grant seeking process, I look forward to sharing more updates from the Development Committee and our various teams working hard on these projects. And if this news excites you, please let me know!

Walking the Derekh

Rabbi Mark Asher Goodman
Interim Director of Derekh
& Youth Tefillah
mgoodman@bethshalompgh.org



Holy Chevre (Friends),

The Derekh program has several exciting programs to look forward to this spring.

First up is a three-part lecture and text learning series on Capital Punishment in Jewish Law. We look at biblical, rabbinic, and modern legal and moral sources on when society ought to (or ought not to) deliver the ultimate punishment to a person that has committed a heinous crime. The topic is certainly weighty, but we as a community rely on our tradition and law to guide us in making the right choices, rather than our emotions or the leanings of contemporary pundits and opinionators. The series takes place in-person and on Zoom on three successive Sundays; February 27, March 6, and March 13; in the Faye Rubenstein Weiss Sanctuary.

Our Speakers Series, a six-part conversation with authors of Jewish books as part of our partnership with the Jewish Book Council, continues on Tuesday, March 29 with Laura Arnold Leibman, author of *Once We Were Slaves*, the fascinating tale of one woman's search for her family history that would eventually discover that the families' origins were as slaves on the island of Barbados. Our fourth speaker is Marc Bookman, who will be discussing his book *A Descending Spiral: Exposing the Death Penalty in 12 Essays* on Wednesday, April 20. And on Sunday, May 15, Pam Jenoff will talk to us about her inspiring book *The Woman with the Blue Star*. All these programs are virtual. You can register for each online by going to our homepage, bethshalompgh.org. You can order the books through our partner, local bookseller White Whale, at www.whitewhalebookstore.com

On Saturday evening, March 12, we bring back the extremely popular 'Clues and Schmooze' - Noah Lubowsky and Aaron Smuckler's team-based quiz game. Join Beth Shalom's own versions of Alex Trebek and Bob Barker (Regis Philbin?) as they determine which individuals in our shul have the best grasp of a wide and varied grab bag of facts and trivia. To register, as always, check out the CBS homepage.

You should also give Beth Shalom's recurring and ongoing Torah classes a try. Rabbi Adelson's Lunch and Learn series is the first Tuesday of the month. This year's theme is "Make a Joyful Noise," about Jewish music. Rabbi Goodman (ahem, that's me) teaches a Monday Talmud class at 9:15 and a Wednesday *Parashat haShavua* and Hassidut class at 12:15. If you're interested in learning biblical, modern, or prayerbook Hebrew, Beth Shalom offers online classes through AJU's Maven program. And on Sunday evenings you can join CBS member Dave Held in our online *parashah* study group.

Youth Tefillah continues with two Saturday services every week. Manny's Service is oriented for children ages 3-7 and takes place at 11:15 am. For kids ages 7-12, we have Junior Congregation, a lively drum circle and learning service. And soon, we look forward to bringing back our engaging Friday night family dinner and service for families with young children, known as Shababababa.

There is really nothing quite like the combination of toddlers, acoustic guitar, and chicken fingers. Pure. Magic.



OUR LEADERSHIP

Growing Through the ELC

Pam Stasolla

Acting Director of the ELC
pstasolla@bethshalompg.org

Many readers of Mishpachtenu may not yet have heard of some of the special programs we offer at the ELC.

One such program is Science with Morah Elaine. Every week Elaine Catz comes with her Super Cart of Science and teaches science in five classrooms, filled with children ages 2-5 years old.

Elaine has been the Early Childhood Science Specialist at Beth Shalom since the 2007-08 school year. Prior to that, she completed a BS in Applied Math, Engineering and Physics and a Master's Degree in Mechanical Engineering. She followed a zig-zagging career path, working at a biomedical instrument company, then spending four years as an assistant pre-school teacher. Mixing those experiences together, she found her true calling in Science Education and has taught in a multitude of venues ever since.

Morah Elaine's lessons include the full range of scientific endeavor, from physics and chemistry to biology and earth/space sciences. And her equipment may include the tiniest insect in a jar, or a giant whale filling the Palkovitz lobby!

Not only do students study a wide range of topics, but they regularly practice important scientific skills, like observing, describing, classifying, questioning and hypothesizing. Hands-on activities allow the children to understand how science relates to their everyday lives. They learn about friction when racing tiny "people" down model "Blue Slides" with and without tiny pieces of cardboard. They learn that grasshoppers can jump much farther than people can, relative to their body size, by trying to jump that far themselves. They learn the difference between translucent and transparent by taking a walk through Beth Shalom and discovering clear and stained-glass windows. They also learn that it is often wise to research first and touch second, especially when dealing with things like unidentified caterpillars.

ELC parents know that when they meet their students after school on science day, they may be confronted



with such questions as, "Did you know that we should not touch slime from slugs?" and "Do you know how to separate salt from pepper when it is mixed up together?" and "Do you know what the top of the tree is called?" and "How many times have you gone around the sun?" and "Do you know what to say when a bee lands on your head?"

Elaine and her husband, Sheldon, are members of Congregation Beth Shalom. Their daughter Dori graduated from the ELC thirteen years ago. Elaine says, "My husband and daughter contribute to Congregation Beth Shalom by working behind the scenes and leading religious services. I'm grateful for the opportunity to use my own talents to support the congregation in a different way. I personally believe that I have the best job of anyone I know. I love the ELC – the children, the families and my co-workers. I wake up excited to go to work every day. How many people can say that?"

We can let you in on a secret that generally only the students know – Morah Elaine's earrings give a hint as to what the class will be studying that day!



Morah Elaine with giant whale in the Palkovitz Lobby

ELC Calendar

March 2022 - May 2022

Thursday, March 17
ELC Purim Celebration

Friday, April 15 12pm – Friday April 22
ELC CLOSED – Passover Break

Monday, April 25
ELC Resumes

Friday, May 6
ELC Grandparents & Special Friends Day

Monday, May 30
ELC CLOSED – Memorial Day

Learning with J-JEP

Rabbi Larry Freedman
 Director of J-JEP
 RabbiLF@jjep.org



Far be it from me to define Conservative Judaism to the readers of *Mishpachenu* but it seems to me that it seeks not simply to know and observe mitzvot but how to apply them to the modern world. The goal is to take the words of Torah and make them come alive for 21st century Jews. I await Rabbi Adelson's correction.

Similarly, there is an understanding about values in the world of education. Two years ago, this congregation and Rodef Shalom sent me to a year-long seminar on experiential education. One of the things they taught us was understanding values as "thin" and "thick." Bear with me.

A thin value is the value. Just the definition. Take, as an example, the value of tzedakah. Simple, yes? Tzedakah is the value of doing acts of righteousness. It is a mitzvah, a Jewish obligation to bring righteousness into the world. Very often, and certainly in a religious school, it involves dropping coins or small bills into our tzedakah box.

That is a very nice and pleasant "thin" expression of the value. One can ask, when meeting a thin value, who could disagree? I mean, who is opposed to righteousness?

The interesting part, the important part, is what happens when you thicken the value. That is what happens when you start to make the value come alive in your life. Let's say, for example, you have \$100 to give to tzedakah. Do you like to give ten groups \$10 or one group \$100? Do you prefer to give to a proper 501(c)(3) or to a man who panhandles outside Giant Eagle?

Let the debate begin.

Should you donate to a hospital or not? And if so, which one? St. Jude's in Memphis? St. Margaret's in Aspinwall or Shaarei Tzedek in Jerusalem? Let the debate begin.

The point of thickening the value is not to find the "correct" answer. There may never be a "correct" answer. The point of thickening the value is to get a person to consider, really consider how to make the value become real, how to apply the value to the modern world. Our goal is to get the children to give thoughtful consideration to how they can live out the value and by extension, how to live out the mitzvah. It's not enough to like a value or to like a mitzvah. Real learning, real growth comes by engaging, wrestling with the value and figuring out how our students can make that value part of their lives. The goal is for you, as well, to engage and wrestle with this or that value to figure out how you live that value, express that value in a real, consistent, concrete manner.

Spring brings Pesah. Pesah reminds us to treat the stranger well (we might say, "at-risk populations" today) because you remember what it was like to be a stranger in Egypt. That is a lovely, thin, sentiment. The challenge for our seder table discussion can be "how." How, specifically, will you treat the stranger well? What concrete action will you take? There isn't a right answer. There is only your answer. So, nu? What is your "thick" answer?



J-JEP Calender March 2022 - May 2022

Wednesday, March 16
 Purim Activities at Rodef Shalom

Sunday, April 10
 Information Session for New & Prospective Families

Sunday, April 24
 Last Day of Classes & Celebration of Learning

Sunday, May 1
 J-JEP Family Day of Service

OUR LEADERSHIP

Beth Shalom Youth Zone

Marissa Tait

Director of Youth Programs

mtait@bethshalompg.org



BSUSY continue to meet (COVID dependent) for great snacks, pool and basketball during Lounge Nights in the Shear Youth Lounge. These Lounge Nights provide great opportunities for teens to spend time together and brainstorm new programs. Lounge nights are held for Kadima on the second and fourth Mondays and BSUSY meets the first and third Monday of each month. We hope to see you there!

We've rented our very own theater, traveled to Ohio, traversed the Minecraft world, played foosball, and ate our weight in chips! We are looking forward to spring and hosting programs outside. Here are some of our upcoming events

Gesher (Kadima) & Specialty Kinnus at Camp Wise in Ohio. We will observe Shabbat, eat delicious kosher food, learn USY traditions, give back to the community by volunteering, discussing our social action topics, and just have a great social weekend with camp friends, shul friends, and new friends!



The Jews For Justice: A Shabbat Dinner and Discussion, our five time award winning Jews for Justice Program, will be held on March 20, 2022 at 11:00 a.m. This year's theme is Jews and the Death Penalty. Register at tinyurl.com/jewsforjustice5782

Our Beth Shalom youth invite you to celebrate Purim with us at our annual Carnival to be held on Sunday, March 13, 2022, at Rodef Shalom Congregation. The Olympic sized Purim carnival will welcome both Congregation Beth Shalom and Rodef Shalom families to the opening games! The Purim Carnival is a time-honored tradition that benefits the Youth Department Programming. We are excited to bring back a fan favorite, Pie in the Face benefiting USY's Tikun Olam Fund, which allocates money yearly to different charities around the world.



Photos taken at Gesher (Kadima) & Specialty Kinnus at Camp Wise in Ohio held November 2021.

Countdown to Pesah 5782/2022

MA'OT HITTIN - PASSOVER TZEDAKAH FUND

From the beginning of the month of Nisan, we are especially sensitive to the needs of fellow Jews who may need our special help and support toward fulfilling all the mitzvot of the Pesah season. If you or another member are in need of financial assistance to purchase Passover food, please contact Tika Bonner at 412-421-2288 x114 or receptionist@bethshalompg.org. All requests will be kept confidential.

A form for donating to our Ma'ot Hittin fund is available on page 14.

BEDIKAT HAMETZ: THURSDAY NIGHT, APRIL 14

The traditional search for hametz on the night before Pesah falls this year on Thursday night immediately after sunset. The blessings for bedikat hametz, found at the beginning of most Haggadot, are recited and the kol hamira formula nullifying unseen hametz may be recited. Hold any found hametz for ritual burning the following morning, April 14. If you need help finding these prayers, please contact Rabbi Adelson.

FAST OF THE FIRST BORN & SIYYUM BEKHORIM: FRIDAY, APRIL 15

All first-borns should fast on this day, usually the day before Pesah but earlier this year due to Shabbat, in commemoration of the deliverance from Egypt of the Israelite firstborn. The Rabbi offers a siyyum (public completion of study) which is followed by a festive meal at which all present may eat, and once having eaten, a first born need not fast that day. The siyyum and the se'udat mitzvah will be held this year on Thursday morning in person and over Zoom at 8:15 a.m., following the 7:30 a.m. morning minyan. We hope to be able to eat together that morning. The Siyyum Breakfast is sponsored by Stanley & Cherie Maharam in loving memory of beloved parents and grandparents Bess & Aaron Maharam.

SALE OF HAMETZ: FRIDAY MORNING, APRIL 15, before 11:00 A.M.

One of the central commandments of Pesah is that we rid ourselves of all forbidden hametz in our possession. Individuals who fully observe Pesah do their best to eliminate hametz as far as possible and then traditionally resort to the procedure of "selling" any hametz which may have been packed away or missed. All hametz must be removed or sold by 11:00 a.m. A form for selling your hametz is available on page 14.

Please return it to our office by April 15 first thing in the morning.

BI'UR HAMETZ - FRIDAY MORNING, APRIL 15

The ritual burning of the hametz found during Thursday night's search should be completed by 11:00 a.m.

The stove should be fully kashered and all cooking proceeds in Pesah pots with Pesah utensils only.

Traditionally no hametz or matzah is eaten after this time until the seder.

Candle Lighting Blessing

BLESSINGS FOR KINDLING FESTIVAL LIGHTS FOR YOM TOV EVENINGS

#1 - Yom Tov Candle Lighting Blessing (1st, 2nd, 7th, and 8th nights when not also Shabbat)

ברוך אתה ה' א-להינו מלך העולם, אשר קדשנו במצותיו, וצונו להדליק נר של יום טוב.

Barukh atah Adonai, Elohenu melekh ha'olam, asher kiddeshanu bemitzvotav, vetsivanu lehadlik ner shel Yom Tov.

#2 - Shehecheyanu Blessing (1st night only)

ברוך אתה ה' א-להינו מלך העולם, שהחיינו וקיימנו והגיענו לזמן הזה.

Barukh atah Adonai, Elohenu melekh ha'olam, shehecheyanu, vekiyemanu, vehigi'anu lazeman hazeh.

#3 - Shabbat and Yom Tov Candle Lighting (instead of #1 when on Shabbat)

ברוך אתה ה' א-להינו מלך העולם, אשר קדשנו במצותיו, וצונו להדליק נר של שבת ושל יום טוב.

Barukh atah Adonai, Elohenu melekh ha'olam, asher kiddeshanu bemitzvotav, vetsivanu lehadlik ner shel Shabbat veshel Yom Tov.

2022 FESTIVAL OF PESAH 5782

Pre-Pesah Preparations

| | | | |
|--------------------|--|-----------|---|
| Thursday, April 14 | Home Search for <u>H</u> ametz | Evening | At home |
| Friday, April 15 | Morning Service | 7:30 a.m. | Faye Rubenstein Weiss Sanctuary and Zoom Fast of First-Born – after Talmud study session at morning minyan, and special prayers, first-borns are exempt from the fast. |
| Friday, April 15 | <i>Bi'ur H</i> ametz - All remaining <u>h</u> ametz must be burned or sold by 11:00 a.m. | | |

Shabbat / First Day of Pesah

Pesah and Shabbat candle lighting (with Blessings #3 and #2 on page 11) at 7:41 p.m.

| | | | |
|--------------------|---|-----------------------------------|--|
| Friday, April 15 | First Seder | No evening service at Beth Shalom | |
| Saturday, April 16 | Early Morning Service | 6:30 a.m. | Faye Rubenstein Weiss Sanctuary |
| | Shabbat/ <u>Pesah</u> Morning Service with <i>Tal</i> | 9:00 a.m. | Faye Rubenstein Weiss Sanctuary and Zoom |
| | Youth Tefillah | 11:00 a.m. | Stofman Zweig Libraries |
| | <i>Minhah</i> Service | 1:00 p.m. | Faye Rubenstein Weiss Sanctuary and Zoom |

Second Day of Pesah

| | | | |
|--|--------------------------------|-----------------------------------|--|
| Saturday, April 16 | Second Seder | No evening service at Beth Shalom | |
| | COMMUNAL SECOND SEDER | 6:00 p.m. | In person and by Zoom |
| Candle lighting after Havdalah from existing flame 8:41 p.m. - Blessings #1 and #2 on page 11 | | | |
| Sunday, April 17 | Early Morning Service | 6:30 a.m. | Faye Rubenstein Weiss Sanctuary |
| | <u>Pesah</u> Morning Service | 9:15 a.m. | Faye Rubenstein Weiss Sanctuary and Zoom |
| | Youth Tefillah | 11:00 a.m. | Stofman Zweig Libraries |
| | <i>Minhah</i> / <i>Ma'ariv</i> | 7:55 p.m. | Faye Rubenstein Weiss Sanctuary and Zoom |

Hol Hamoed – Intermediate Days

| | | | |
|---------------------|----------------|-----------|--|
| Sun. 4/17–Wed. 4/20 | Evening Minyan | 7:00 p.m. | Faye Rubenstein Weiss Sanctuary and Zoom |
| Mon. 4/18–Thu. 4/21 | Morning Minyan | 7:30 a.m. | Faye Rubenstein Weiss Sanctuary and Zoom |

Shabbat/Seventh Day of Pesah

| | | | |
|--------------------|------------------------------|-----------|--|
| Thursday, April 21 | <u>Pesah</u> Evening Service | 6:00 p.m. | Faye Rubenstein Weiss Sanctuary and Zoom |
|--------------------|------------------------------|-----------|--|

Pesah candle lighting at 7:47 p.m. - Blessing #1 on page 11

| | | | |
|------------------|-----------------------|------------|--|
| Friday, April 22 | Early Morning Service | 6:30 a.m. | Faye Rubenstein Weiss Sanctuary |
| | <u>Pesah</u> Service | 9:15 a.m. | Faye Rubenstein Weiss Sanctuary and Zoom |
| | Youth Tefillah | 11:00 a.m. | Stofman Zweig Libraries |

Eighth Day of Pesah

| | | | |
|------------------|-------------------------|-----------|--|
| Friday, April 22 | Shabbat Evening Service | 6:00 p.m. | Faye Rubenstein Weiss Sanctuary and Zoom |
|------------------|-------------------------|-----------|--|

Candle lighting at 7:48 p.m. from existing flame - Blessing #3 on page 11

| | | | |
|--------------------|---|------------|--|
| Saturday, April 23 | Early Morning Service | 6:30 a.m. | Faye Rubenstein Weiss Sanctuary |
| | Shabbat/ <u>Pesah</u> Service, with <i>Yizkor</i> | 9:00 a.m. | Faye Rubenstein Weiss Sanctuary and Zoom |
| | Youth Tefillah | 11:00 a.m. | Stofman Zweig Libraries |
| | <i>Minhah</i> / Discussion / <i>Ma'ariv</i> | 7:50 p.m. | Zoom |

Havdalah 8:49 p.m.

Pesah Yizkor Appeal 5782

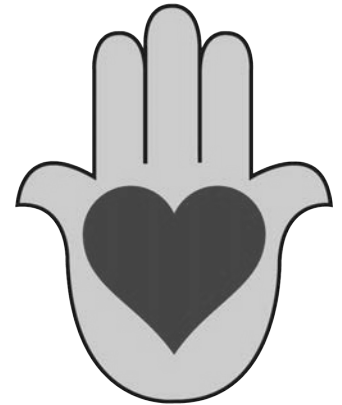
Each year, during the holidays of Pesah, Shavu'ot, Yom Kippur, and Shemini Atzeret, a special Memorial Service is held. It is a time when we honor the memory of our beloved departed family members. Yizkor Services are held on these four holidays and, in the tradition of the mitzvah of giving, an appeal is made for funds during the Yizkor Service.

Our Passover Yizkor Service will take place on Saturday morning, April 23, at approximately 10:30 am. It is appropriate to make a contribution in order to link the memory of dear ones to an act of loving kindness. If you wish, please fill out the form below with the name of the loved ones you wish to honor so that their names can be printed in *Mishpachtenu*.

If you would like additional information regarding the Yizkor Appeal, please call the office at 412-421-2288. With grateful thanks for your continued support of our synagogue, and with all good wishes for the coming Festival.

Please tear off and mail to:

Congregation Beth Shalom
5915 Beacon Street
Pittsburgh, PA 15217



I/We wish to contribute to the Passover Yizkor Appeal

Online form available at www.bethshalompgh.org/Passover-Yizkor-Appeal-5782

In memory of: _____

(Please Print)

Enclosed please find my check in the amount of: \$ _____

Name: _____

Address: _____

Phone #: _____

Email: _____

Ma'ot Hittin - Passover Tzedakah Fund

With the approach of spring and Passover, it has always been the tradition of our congregation to establish a Ma'ot Hittin fund which will be used to help the impoverished Jews of our city and others in need to prepare for the great festival of liberation. It is our communal responsibility to provide the necessary food for a Passover Seder and for the observance of the holiday in general. If you or another member are in need of financial assistance to purchase Passover food, please contact Tika Bonner at 412-421-2288.

Please send us your contribution (checks should be made payable to Beth Shalom Ma'ot Hittin Fund) so that we have adequate funds to help the many Jews who will be turning to us prior to Passover. Your generosity will help make other Jewish families happy as they celebrate this holiday of freedom. Thank you.

MA'OT HITTIN - PASSOVER TZEDAKAH FUND

Online form available at www.bethshalompgh.org/maot-hittin-5782

Enclosed is my contribution in the amount of \$_____ for the Ma'ot Hittin Fund. Please make check payable to Congregation Beth Shalom Ma'ot Hittin Fund. Thank you.

Name: _____
Address: _____
Phone #: _____
Email: _____

✂ — — — — — PLEASE CUT AND RETURN EACH FORM SEPARATELY — — — — —

SELLING OF HAMETZ - מכירת חמץ

Hametz, not explicitly defined in the Torah, is described in rabbinic literature as being these five species of grain: wheat, spelt, oats, barley, and rye. Although matzah must be made from one of these, we are forbidden by halakhah (Jewish law) to eat, own, see, or benefit from any other form of these grains on Pesah. (Please note: rice, legumes, quinoa, corn, etc. are not hametz. See pg. 15 for more details.)

Please take the opportunity to fill out the form below and return it to the synagogue by **11:00 a.m. on Friday, April 15** in order to have your hametz included in the sale.

It is customary to include a donation to support the vulnerable in our community. These funds will be contributed to Rabbi Adelson's Discretionary Fund which is used to provide scholarships, offer assistance to those in need and to promote Jewish cultural, educational and religious activities.

Hag kasher vesameah (A Happy and Kosher Pesah)!

Rabbi Seth Adelson

CONTRACT FOR THE SELLING OF HAMETZ 2022/5782

Online form available at www.bethshalompgh.org/selling-hametz-5782

I (We) _____ hereby fully empower and authorize Rabbi Seth Adelson to dispose of all hametz that may be in my (our) possession – wherever it may be: at home, place of business or elsewhere (knowingly or unknowingly). Rabbi Adelson has the full right to sell, dispose of and conduct all transactions in accordance with the detailed terms explained in the Hebrew contracts. The above power hereby given is meant to conform with all Torah and Rabbinic regulations to meet the requirements of Jewish law.

Name(s): _____

Location of Hametz: _____

Amount donated: _____

Sign Here: _____

A Brief Pesah Kashrut Guide

A full description of kashering processes and listing of permitted foods can be found at:
www.rabbinicalassembly.org/pesah-guide

The process of kashering utensils depends on how the utensils are used. According to *halakhah*, leaven can be purged from a utensil by the same process in which it was absorbed in the utensil (*kevolu kakh polto*). Therefore, utensils used in cooking are kashered by boiling, those used in broiling are kashered by fire and heat, and those used for only cold food are kashered by rinsing in cold water.

A. Earthenware (china, pottery, etc.) may not be kashered. However, fine translucent chinaware which has not been used for over one year may be used if scoured and cleaned in hot water.

B. Metal utensils (wholly made of metal) used in fire (spit or broiler) must first be scrubbed and cleansed and then made as hot as possible. Those used for cooking or eating (silverware, pots) must be thoroughly cleaned and completely immersed in boiling water. Pots should have water boiled in them which will overflow the rim. The utensils should not be used for a period of at least 24 hours between the cleaning and immersion in boiling water. Metal baking utensils cannot be kashered.

C. Oven and Ranges - Every part that comes in contact with food must be thoroughly scrubbed and cleaned. Then, the oven and range should be heated as hot as possible for a half hour. If there is a broil setting, use it. Self-cleaning ovens should be scrubbed and cleaned and then put through the self-cleaning cycle. Continuous-cleaning ovens must be kashered in the same manner as regular ovens. A microwave oven, which does not cook the food by means of heat, should be cleaned and then a cup of water should be placed in it. Then the oven should be turned on until the water "boils." A microwave oven that has a browning element cannot be kashered for Pesah.

D. Glassware - Authorities disagree as to the method of kashering drinking utensils. One opinion requires soaking in water for 3 days, changing the water every 24 hours. The other opinion requires only a thorough scrubbing before Pesach, or putting it through the dishwasher.

E. Dishwasher - After not using the dishwasher for a period of 24 hours, a full cycle with detergent should be run. It may then be used for Pesah.

F. Electrical Appliances - If the parts that come in contact with *hametz* are removable, they can be kashered in the appropriate way (if metal, follow the rules for metal utensils). If the parts are not removable, the appliance cannot be kashered. (All exposed parts should be thoroughly cleaned).

G. Tables, closets and counters - If used for *chametz*, they should be thoroughly cleaned and covered and then they may be used.

H. Kitchen Sink - A metal sink can be kashered by a thorough cleaning and by pouring boiling water over it. A porcelain sink should be cleaned and a sink rack used. If, however, dishes are to be soaked in a porcelain sink, a dish basin must be used.

I. Hametz and non-Passover utensils - Non-Passover dishes, pots and *hametz*, whose ownership has been transferred, should be separated, locked up or covered, and marked so as to prevent accidental use.

Permitted Foods

A. The following foods require no *kasher lePesah* label when purchased before or during Pesah: fresh fruits and vegetables that have not been coated, eggs, unflavored tea bags, unflavored regular coffee, 100% Extra Virgin Olive Oil, whole or raw tree nuts, whole (unground) spices, fresh fish from a kosher source and fresh kosher meat or frozen, raw hekshered meat (other than ground products as ground products with prohibited materials could be made on the same equipment).

B. The following products require reliable *kasher lePesah* certification (regular kosher supervision not being sufficient) whether bought before or during Pesach: all baked goods (farfel, matzah, any product containing matzah, matzah flour, matzah meal, Pesach cakes), all frozen processed foods, candy, canned tuna, cheeses, chocolate milk, decaf coffee, decaf tea, dried fruits, herbal tea, ice cream, liquor, non Grade A butter, oils, soda, vinegar, wine, yogurt.

C. The following foods require no *kasher lePesah* label but do require kashrut supervision if purchased new and unopened before Pesach: all pure fruit juices in plastic or glass bottles, filleted fish, frozen fruit (no additives), non-iodized salt, pure white sugar (no additives), unsalted Grade A butter, white milk

D. Any processed food bought during Pesah must have a *kasher lePesah* label.

E. Any detergent, because it is not a food and it is not eaten, may be used for Pesah as long as it has valid kosher supervision. Medicines: Since *hametz* binders are used in many pills, the following guidelines should be followed: If the medicine is required for life sustaining therapy, it may be used on Pesah. If it is not for life sustaining therapy, authorities differ in their approaches. Please consult with your rabbi. Capsules, because they do not need binders, are preferable to pills.

In December 2015, the Committee on Jewish Laws and Standards ruled kitniyot, or non-*hametz* grains and legumes such as rice, millet, chickpeas, fenugreek, etc., are acceptable for Ashkenazim to consume during Pesah provided the kitniyot have been checked 3 times before Pesah and were not stored with *hametz*.

BENEI MITZVAH

Leo Marcus, the son of Lisa and Jonathan Marcus, older brother of Rosie Marcus, and grandson of Marsha and Bernard Marcus, and Susie and Daniel Zeidner, will become a bar mitzvah on March 12, 2022.

Now in seventh grade, Leo has attended Community Day School since pre-kindergarten. He plays chess, street hockey, and Minecraft, and is an avid fan of the MCU (Marvel Cinematic Universe).



Bar Mitzvah: 3/12/2022

Barak Raz is the Son of Elana and Ariel Raz, brother of Omri and Keren Raz, grandson of Gila and Micha Raz and Ivor and Vera Altshuler, great-grandson of the late Shirley and Al Zions and late Eli and Dorli Rozenblatt.

Barak is in seventh grade at Community Day School. He plays soccer, basketball, and tennis. He also plays violin in the Community Day School band. Barak will be celebrating becoming a bar mitzvah on April 9, 2022.



Bar Mitzvah: 4/9/2022

Zoe Freyberg is the daughter of Zach and Robin Freyberg and sister of Max Freyberg. She is the granddaughter of Larry and Joyce Haber, Victoria Freyberg and the late Victor Freyberg.

Zoe is in the 7th grade at Community Day School. She loves math and is an avid reader of YA books. She loves the Performing Arts and has participated in six productions (and counting). When she is not busy with school, reading, or acting, you'll find her in the kitchen baking her famous treats. Zoe will celebrate her bat mitzvah on May 7, 2022.



Bat Mitzvah: 5/7/2022

Gabriella Sarit Kunzman is the daughter of Dana and Jason Kunzman, sister of Seth Kunzman, granddaughter of Nancy and Mark Kunzman and the late Linda Kunzman, and Paula Levine and the late Sheldon Levine.

Gabi is in the 8th grade at Community Day School and loves to play all sports. Gabi volunteers at the JCC, is an avid supporter of social justice, and brought the ADL's program *No Place For Hate* to CDS. Gabi will celebrate becoming a bat mitzvah on May 14th, 2022.



Bat Mitzvah: 5/14/2022

Henry Katz will be celebrating his Bar Mitzvah on March 26, 2022.

Mark Your Calendars



Annual Congregational Meeting

**Tuesday, May 24, 2022
at 7:30 p.m.**

Topics covered will include:

Annual Budget

Annual Reports

Approval of Board of Trustees members

Benei Mitzvah Planning

We begin working with families of students in fourth grade, toward their becoming benei mitzvah.

Please remember that all information related to bat/bar mitzvah and so much more about the process can be found online in the



Beth Shalom Benei Mitzvah Handbook, which you can download as a PDF at **BethShalomPgh.org/lifelong-learning/benei-mitzvah**.

Please be in contact with Audrey Glickman, Rabbi's Assistant, at **RabbiAsst@BethShalomPgh.org**.

SAVE THE DATE

Second Night Congregational Seder

**SATURDAY, APRIL 16
Begins at 6:00 p.m.**

Join us on the second night of Pesah for a Congregational Seder. With optimism above and beyond, we hope this year we will be able to meet in person.

Watch for more details closer to Pesah.



OUR LEADERSHIP

The Sisterhood Says

Judy Kornblith Kobell
Sisterhood President
jayeko@msn.com



Spring is coming and Sisterhood is once again looking forward to the upcoming months.

In the meantime, we have been able to have a couple of in-person events over the winter. In December, Sisterhood had a very successful Hanukkah party. It was a good time to meet, eat and schmooze. I want to thank Judith Kline, Barbara Oleinick and Lidush Goldschmidt for chairing and preparing and all the set-up and arrangements. I also want to thank Cheryl Blumenfeld for hosting the gift exchange and making it so much fun.

February was our annual Sisterhood Shabbat. We were honored to have Dr. Barbara Burstin as our featured speaker. She is an author, educator and lecturer par excellence. We thank her so much for her words of wisdom. My deep appreciation to Helen Feder, who arranged for all the participants, Linda Newman for publicity and Lidush Goldschmidt for planning the walk-away kiddush.

Also in February, Sisterhood was the sponsor of the Beth Shalom Blood Drive. I am grateful that many members volunteered to greet and help out that day. Thanks to everyone. It was a mitzvah for all of us.

Sisterhood continues to support Beth Shalom events such as Latkepalooza, Purim Carnival and *Mishloah Manot* and, pandemic permitting, to host Shabbat dinners with the Men's Club. On another note, our Latin Cardio with Connie Pollack is in full swing, our Book Club continues and our Judaica Shop has lots of new and enticing merchandise. Please contact Barbara Kaiserman for your Judaica needs. Save the date, Sunday, April 3, for our Torah Fund Brunch!

All good wishes for a sweet Pesah and a happy, healthy 2022!



B'vrachot

Sisterhood Judaica Shop

All Passover items

30% OFF



Valid March 1 to April 30, 2022



All Challah trays and
Kiddush Cups

30% OFF

Valid May 1 to May 31, 2022

Open by appointment.

Barbara Kaiserman 412.422.5677

Plan For Your Future Now

We Can Help With:

- Pre-need Planning
- Plot Selection
- Monument Ordering

We Offer to You:

- Beth Shalom Cemetery
- Beth Shalom Mausoleum
- Temple Ohav Shalom Memorial Garden
- Homestead Hebrew Cemetery



Visit Our Cemetery

Cemetery gates open at 8:00 a.m. and close at sunset. The Cemetery is also closed at sundown on Friday through the Sabbath and all Jewish holidays.

For more information, contact us at **412.421.2288** or **cemetery@bethshalompgh.org**

The Men's Club

Ira Frank

Men's Club President
natfabira@juno.com



Calendar of Events

Check out some of the upcoming events that Men's Club has planned for Spring 2022.

Men's Club Sweepstakes

First Weekly Drawing begins the evening of April 1 and continues every Friday through November. Please support us by purchasing a ticket. Each ticket costs \$50.

Don't forget the Hanukkah Gelt! Winners picked every day of Hanukkah! Win multiple times!

Men's Club Shabbat, April 2

Contact Sandy Zaremborg at 412-421-7387 if you want to participate. Natalie Hall will be our special guest speaker.

Pre-Passover Pizza Night, April 14

Watch for more details to follow closer to date.

Evening of April 27, Yom HaShoah

Please remember to light the yellow candle delivered with the Purim bags.

Flag Planting

Sunday, May 22 at 9:30 a.m.

Please join us at Beth Shalom's Cemetery to commemorate Memorial Day by placing flags on all of the veterans' graves. Adults and children are welcome – a meaningful and nice socially distanced outdoor activity!

Flag Planting Co-chairs:

Dror and Eitan Elhassid



Continuation from page 4 of our President's article

As one can see, we have much to be thankful for despite our wanderings and challenges through the COVID desert as we approach the upcoming season of renewal with hopes for easier and better times.

The message I would like to leave you with is: regardless of the hurdles (plagues) which are put before us, if we stay focused on being the best we can be and being true to our values, we will reach the "promised land" as our forefathers reached Canaan after 40 years in the desert. We have had a great year due to our resilience, the hard work of our staff, clergy lay leadership, volunteers and kindness of our congregants all working together for our common good. We must continue our diligence and hard work as we will always be tested.

May we always go from strength to strength.

Have a happy and meaningful Passover.

Alan Kopolow
President

2021/5782 Men's Club Hanukkah Gelt Winners

Congratulations to the Hanukkah Sweepstakes Winners!

Mid-day Winners

11/29/2021: Marc Schwartz
11/30/2021: Joan Gonnells
12/1/2021: Natalie Rosenbloom
12/3/2021: Jack Sussman
12/5/2021: Michael Goldstein
12/6/2021: Bruce Klein

Evening Winners

11/29/2021: Robert Zaremborg
12/1/2021: Mindy Shreve
12/2/2021: Marc Schwartz
12/3/2021: Marc Schwartz
12/4/2021: Michael Goldstein



Beth Shalom's Legacy Circle...



Moshe Baran



Dr. Elaine H. Berkowitz



Ira Frank



Jack & Bernice Meyers



Jay Fingeret



Joel Smalley



Gloria Elbing-Gottlieb



Mindy Shreve



Sharon & Steven Schwartz



Julian A. Elbing



Bunny Morris



Deborah & Nathan Firestone



Paul Munro



Nancy & Gary Tuckfelt



Sarita & Milton (z"l) Eisner



Carl & Elaine (z"l) Krasik



Ari & May Chester



Yale & Barbara Rosenstein



Shiri & Josh Friedman



Jessica Hammer & Chris Hall



Fred & Linda Newman



Gerald Kobell



Jane & Bruce Rollman



Gina Levine



Eva & Gary Friedman



David S. Horvitz



Paul Teplitz



Harvey & Beverly Robins

...welcomes our newest Legacy Circle members.



Robert Gleiberman

Anonymous



Gail Neft



Lisa Steindel

Ellen & Mike Siegel

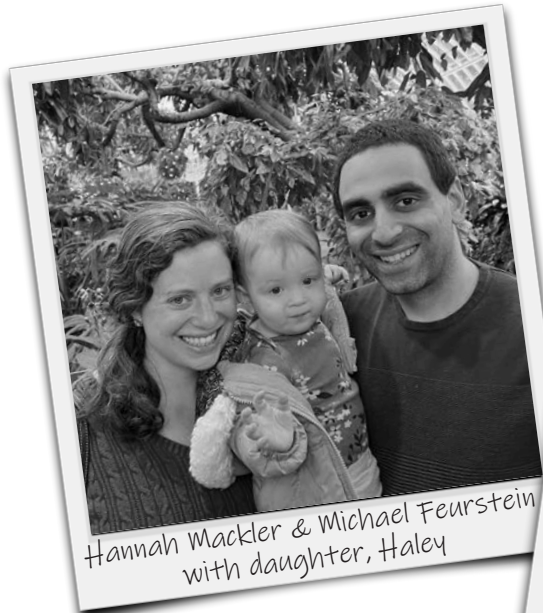


Richard & Sharon Sweet

What Jewish tomorrows do you want to assure at Beth Shalom...religious services, education, youth programs, a caring and compassionate community, a beautiful building for life-cycle events? Making a legacy gift assures that Beth Shalom will be here for future generations. Joining the Legacy Circle is easy – simply let us know you are thinking about making a legacy gift to the shul through your will, trust, retirement plan, life insurance policy or other option and we are happy to sit down and chat with you about creating your Jewish legacy. Please contact Rabbi Andy Shugerman, at 412-421-2288 Ext. 317, or rabbianti@bethshalompgh.org, Ira Frank (natfabira@juno.com) or Mindy Shreve (mindyshreve@gmail.com).

Beth Shalom Welcomes Its Newest Members

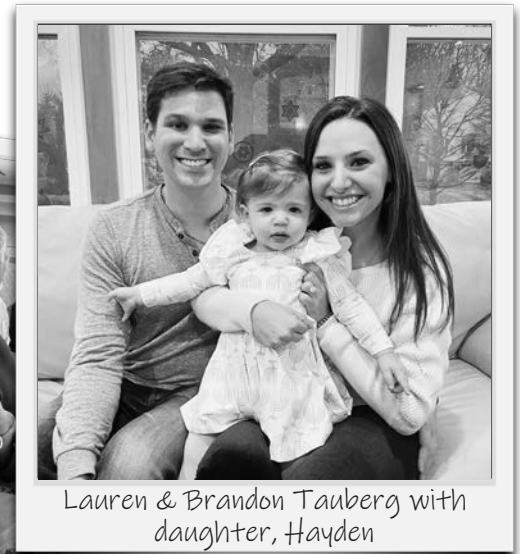
Lauren & Brandon Tauberg
Shira Berkovits & Ari Spiro
Hannah Mackler & Michael Feurstein
Keren Gilboa & Jeremy Holzer



Hannah Mackler & Michael Feurstein
with daughter, Haley



Linda Safyan Holber & Mindy Shreve
Board & Membership Committee Members
holding New Member Welcome Bags



Lauren & Brandon Tauberg with
daughter, Hayden

We look forward to being part of your memories.

Request for Board of Trustees Nominations

The Nominating Committee has begun to meet and is soliciting names for open positions on the incoming Board of Trustees. Board members serve a two-year term. Please reach out to the committee members below with your interest to serve or with recommendations of others to serve on the Board.

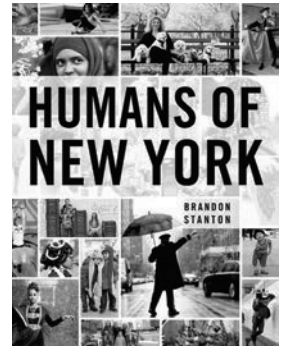
Many thanks!
Nominating Committee 2022

Rachel Albert, rachelalbert@gmail.com
Debby Firestone, debbyfire@gmail.com
Boaz Frankel, boaz.frankel@gmail.com
Arthur Goldberg, artgoldberg@verizon.net
Abby Morrison, alm@abbym.net

Connie Pollack, conniepollack@hotmail.com
Diane Samuels, dianesamuelscpa@gmail.com
Lisa Steindel, lksteindel@comcast.net
Richard Sweet, rsweet57@gmail.com
Robert Zaremborg, rzaremborg@comcast.net

Humans of Beth Shalom (HOBS)

As a means of introducing members of our congregation to each other, we provide this section of Mishpachtenu, entitled Humans of Beth Shalom (inspired by the famous Humans of New York, or HONY, series). Here, we highlight one or two member “units” (a family or individual) and we look forward to introducing others in the future. We asked the responders to identify themselves and then to respond to a subset of pre-selected questions.



Irene Kaplow and David Held

Name in English and in Hebrew (phonetic).

English: Irene Miriam Kaplow

Hebrew: Chava Miriam bat Aryeh Lev v'Yocheved

English: David Avi Held

Hebrew: David Avi Ben Gershon Mordechai v'Yuta Chava

Where were you born and which places have you lived in?

Irene: I was born in Boston. I lived in the Boston, MA, area; then the Palo Alto, CA, area; and then Pittsburgh, PA.

Dave: I was born in Miami, FL, then I lived in Boston, then a city in Israel called Givat Shmuel, then Palo Alto, CA, and Berkeley, CA, and then Pittsburgh.

How long have you been a member of Congregation Beth Shalom?

We've been members of Beth Shalom for about four and a half years.

What are some of the ways you are maintaining a sense of community during COVID?

Irene: Within Beth Shalom, I started the Young Adult Buddy Program. Beth Shalom young adults get matched with buddies every month and have a 30-minute conversation (usually a Zoom call) with their buddies. This has enabled young adults at Beth Shalom to get to know each other even though we have not been able to have in-person events.



Havdallah at Irene and Dave's home

Dave: I organize Beth Shalom's weekly parashah study group, which Irene is active in, too. Also for a number of months during the first year of COVID, when services were only on zoom, we invited Jewish friends to our backyard for Kabbalat Shabbat or Shabbat Musaf. Sometimes we'd even gather in a foot of snow. I would shovel the backyard and we would sit in the cold and davan together.

Continued on page 23

Continued from page 22

Where were your grandparents born and how have those cultures influenced your traditions?

Irene: Three of my four grandparents were born in the United States. My paternal grandfather was born in Germany in January 1925. He was fortunate to get out in January 1939. The main influence he had on my Jewish practice was not his culture but his gratitude for having gotten to the United States before the Jews in his town were sent to concentration camps, and his commitment to helping people who were not as fortunate as he was. My grandfather took the Jewish tradition of being thankful extremely seriously; the general idea of regularly showing God that I am thankful for what I have is something that I think I learned from him. My grandfather was also committed to helping people in need both in the Cleveland area, where he spent most of his life, and in Israel. I have tried to follow his example of helping the needy by budgeting money for tzedakah and making a tzedakah donation around every major Jewish holiday.

How and why did you choose Beth Shalom as your Congregational community?

Irene: I grew up in a very traditional Conservative synagogue, and Beth Shalom was the most similar community in Pittsburgh. When I visited Beth Shalom after my interview for my postdoc, I received a really warm welcome from many members and met a couple other friendly people my age. That experience made me very enthusiastic about joining.

Describe a memory that you have as it pertains to Israel, how has it impacted you in your life?

Dave: After I graduated from college, I was traveling around Europe with good friends and we went to a Chabad for dinner while we were in Italy. There we met a bunch of other tourists who were also traveling around Europe — and, even though they came

from different parts of the world, they were able to speak Hebrew to one another. It showed the power of Hebrew to connect Jews across different cultures and places because they were all able to communicate by knowing the same language. That's the moment I decided I really wanted to learn Hebrew better, which was part of why I moved to Israel for two and a half years. At some point while I was living in Israel, I had to travel to Italy for a research project, and I went to a kosher restaurant in Pisa where I spoke Hebrew. It was kind of a full circle moment because I was able to connect with Jews in Italy even though they didn't have good English skills.

What food connects you to feeling Jewish? Where is that memory from?

Dave: Growing up, our synagogue was located basically right behind my house. So every year at the end of Yom Kippur, our family would host the break-fast for our group of friends so they didn't have to walk a long way home after fasting. It brought together friends, home, synagogue, and the community in one event, and I always appreciated that.

What's something that you feel passionate about? A hobby, a belief, your work, family, etc.

Irene: I am extremely passionate about my work, which involves using genetics to study the evolution of the mammalian brain. At a more general level, I am passionate about understanding how tissues work at a molecular level and how this has changed over the course of mammalian evolution. While my work is at a very basic science level, understanding why human tissues differ from those of other closely related species has the potential to provide insights into what happens during diseases affecting those tissues. I am committed to doing work that has the potential to assist in *tikkun olam*, even if the *tikkun olam* that is enabled by my work is many decades away. I feel strongly that every Jew is capable of doing *tikkun olam* in some way and that people should pursue the paths to *tikkun olam* that they find most exciting.

OUR CONGREGATIONAL FAMILY

Your Contributions

November 1, 2021 — January 31, 2022

Cemetery Donations - Non-Appeal

In Appreciation Of:

Lonnie Wolf

Gil Schneider & Stefi Kirschner

Derekh Donations

In Appreciation Of:

Rabbi Mark Asher Goodman

Dee Selekman

In Honor Of:

Tammy Hepps

Gary & Nancy Tuckfelt

In Memory Of:

Elaine Gaynor

Cindy Harris & F. Heath

General Fund

Celebrating:

Ria David and Mark Perlin

Steve & Vicky Hoffman

In Appreciation of:

Judy Adelson

Larry & Deborah Freedman

In Honor of:

Steve & Sharon Schwartz

Michelle Vines

Kristin Zappone

Mark & Noa Goodman

Sally Greenwald

Bunny Morris

Irwin Deitch

Lonnie & Natalie Wolf

Speedy Recovery:

Rita Rosenthal

Sally Greenwald

Stanford Davis

Alan & Fern Steckel

In Memory Of:

Avis Judith Schlar

Dan & Ronna Askin

Richard & Helen Feder

Scott Leib & Cindy Goodman-Leib

Sanford & Elinor Zaremborg

Beverly Friedman

Martin Gaynor

David & Teddi Horvitz

Connie Kreshtool

Alan & Fern Steckel

David Fauman

David Plaut & Marlene Behrmann Cohen

Richard & Helen Feder

David & Teddi Horvitz

Martin & Michelle Lubetsky

Ellen LeVee

Dan & Ronna Askin

David Plaut & Marlene Behrmann Cohen

Francine Gelertner

Alan & Fern Steckel

Gary Steiner

Alan & Fern Steckel

Howard Block

Mindy Shreve

Jonathan Kurland

Noah & Aviva Lubowsky

Marilyn Sure

Lonnie & Natalie Wolf

Joe Cibula's sister

Lonnie & Natalie Wolf

Miriam "Mimi" Ginsberg

Bunny Morris

Gail Neft

Noah Hershkowitz

Debra Hershkowitz

Rae Sablowski

Gail Neft

Judy Smalley

Dan & Ronna Askin

Richard & Helen Feder

Robert & Ellen Garvin

Jack & Mimi Halpern

Marlene Haus

David & Teddi Horvitz

Samuel & Judith Kayam

Gil Schneider & Stefi Kirschner

Elliott & Bobbee Kramer

Carl Krasik

Penina Lieber

Bunny Morris

Ralph & Audrey Silverman

Yvonne & Barry Stein

Jay & Jessy Stein

Rick & Shari Sweet

Patricia Weiss

Lonnie & Natalie Wolf

Sanford & Elinor Zaremborg

Seymour Estner

Lora Rigatti

Shoshana Gadasi

Dan & Ronna Askin

Alan & Linda Doernberg

Noah & Aviva Lubowsky

Teddy Nisenbaum

Christine Wable

Todd E Rascoe

David & Carole Steinbach

J. Leonard Frank Early Minyan Endowment

In Honor Of:

Shoshana Gadasi

Judith Kline

Your Contributions

November 1, 2021 — January 31, 2022

In Honor Of:

Elyse Eichner

Judith Kline

Aviva Lubowsky

Judith Kline

In Memory Of:

Beverly Friedman

Ira Frank

Avis Judith Schlar

Ira Frank

Judy Smalley

Judith Kline

Elaine Love Supowitz

Judith Kline

Mildred & Isadore Berkowitz Memorial Fund

In Memory Of:

Howard Block

Aunt Elaine

Preschool Donations

In Memory Of:

David Fauman

Yvonne & Barry Stein

Rabbi Adelson Disc Fund

In Memory Of:

Miriam "Mimi" Ginsberg

Nancy Zions

Judy Smalley

Nancy Zions

Samuel & Mollie Zytznick Endowment Fund

In Memory Of:

Jay Zytznick

Murray & Doris Friedman

Thomas Mordechai and Simcha Rosenstein Memorial Fund

In Memory Of:

Shoshana Gadasi

Yale & Barbara Rosenstein

Avis Judith Schlar

Yale & Barbara Rosenstein

Speedy Recovery:

Yale Rosenstein

Michael & Carol Beth Yoffee

USY Programming 21/22

In Memory Of:

Todd Rascoe

Elena Leib

Yahrzeit Donation 2021

In Memory Of:

Miriam "Mimi" Ginsberg

Alan & Linda Doernberg

Youth Education Programming 2021

In Memory Of:

Judy Smalley

Natalie Rosenbloom

H. David Rothman

Elliot & Martha Rothman

Ellen LeVee

Eddie & Wendy Shaw

Avis Judith Schlar

Harry & Laurie Zions

Youth Fund

In Honor Of:

Art Morally

Ruth Weiss

Hilary Yeckel

Mindy Shreve

In Memory Of:

Betty Morally

Ruth Weiss

Virtual Third Meal

Relax between *Minhah* and *Ma'ariv* each week as we are led in study. Since we cannot eat in person right now, we are asking for volunteers to sponsor the "meal" for \$100 per week, to provide for ritual necessities such as Torah repair.

If you are able to sponsor a virtual third meal, please contact Ira Frank at 412-849-2937 or natfabira@juno.com.



OUR CONGREGATIONAL FAMILY

Yahrzeit Donations

November 1, 2021 — January 31, 2022

Richard & Cynthia Abrams
Carl & Honey Adelsheim
Mrs. Anna Adler
Mr. Stephen A. Alber
Mr. & Mrs. C. Daniel Askin
Barbara Azizo
Joseph & Rebecca Baem
Elton Bailiss
Linda Barbanel
Judith Bardack
Mrs. Regina Bardin
Marilyn Barmak
Alan & Patricia Barnett
Gary & Phyllis Barr
Mr. & Mrs. Bernard Bauer
Mr. Ahmie Baum
Mr. & Mrs. Alan Beckerman
James Beebe
David Plaut & Marlene Behrmann Cohen
Mr. & Mrs. Samuel Beigel
Daniel & Neila Bendas
Alan Berg & Sharon Wolpert
Arthur & Carla Berg
Dr. Elaine Berkowitz
Dr. Barry & Mrs. Velma Berkey
Rochelle Berman
Aaron Bernhardt & Barbara Rozen
Greg & Rebecca Berenfield
Howard & Barbara Bernstein
Mary Bernstein
Thomas & Karen Bernstein
Mrs. Cheryl Blumenfeld
Sheila Brody
Susan Brody
Susan Brody & Julie Nysewander
Nancy Bromberg
Lois Bron
Bernard Browning & Rose Kay Faust
Peter & Stephanie Brown
Elliott Calig
Hedy Caplan
Sharon Charney
Rhoda Chosky
Mr. & Mrs. Lev Chudnovsky
Leonid & Rina Chudnovsky
Mrs. Andrea Cohen
Mr. Leon J. Cohen
Lois Cohen
Ms. Gertrude S. Cohn
Mr. Tom Cohn
Ms. Judith Colker
Bruce Rabin & Estelle Comay
Ms. Eileen Cook
Mrs. Lois Crone
Natalie Cuban
Paul & Jan Daniels
Ms. Jennifer Darling
Mrs. Darling
Janis & Arthur Davidson

Marjorie Davidson
Larry & Sharon Dobkin
Mr. & Mrs. Alan Doernberg
Phyllis Dreyfuss
Mrs. Rochelle Dueser
Mrs. Helen Eaton
Aaron & Ellen Edelstein
Carol Edelman
Hanna Edelstein
Dr. Leonard Eisenfeld
David & Karen Eisner
Ms. Cookie Elbling
Gloria Elbling Gottlieb
Julian Elbling
Lois Engel
Arthur & Sybil Epstein
Joseph Epstein
Dr. & Mrs. Brian Ernstoff
Paul & Narda Fargotstein
Donald Farkas
Evelyn Favish
Mr. & Mrs. Richard Feder
Bruce & Susie Feldman
Harriet Fibus
Mark Fichman & Ruth Fauman-Fichman
Mrs. Barbara Fine
Ruth Fineberg
Mrs. Sheila Reicher Fine
Michael Fisher
Ms. Carolyn Flamm
Michael & Ginger Foreman
Honey Forman
Barbara Franklin
Mr. Phillip Frandler
Charles & Marilyn Freed
Michael & Debra Freiser
Robin Friedman
Cary & Laura Friedman
Gary & Eva Friedman
Judith Friedman
Bernice Friedlander
Mrs. Paula Garret
Mr. James Ferrise
Robert & Ellen Garvin
Mr. & Mrs. Ron Geistman
Joshua Geller
Marlene Gelman
Semyon & Svetlana Geshiktor
Ms. Elayne Gilbert
Harvey & Wendy Gillis
Robert & Lesley Ginsburg
Stuart Gisser
Lawrence & Rochelle Glanz
Sheila Glasser
Kenneth Glick
Mr. & Mrs. Robert Glimcher
Mrs. Patricia Glosser
Alex & Dasha Goldin
Dr. Ellen Golding

OUR CONGREGATIONAL FAMILY

Yahrzeit Donations

November 1, 2021 — January 31, 2022

Dr. Ross Berkowitz
Dr. Gerald S. Goldberg
Harold & Debra Goldberg
Morton & Racelle Goldstein
Ms. Nancy Golding
Richard & Renee Goldman
Wendy Bee
Robert Gordon
Sanford Gordon
Meryl Gotlieb
Ms. Debbie Gottlieb
Terri Gould
Mr. & Mrs. Martin Graff
Mr. & Mrs. Robert Grant
Joel & Pamela Greenhouse
Mr. & Mrs. Arnold Green
Richard & Dana Green
Samuel & Dorothy Greenfield
Terri Greenberg
Howard & Beth Grill
Mr. & Mrs. Leonard Grobstein
Mark Groudine
Robert & Judith Grumet
Myriam Gumerman
Mrs. Polya Gutman
Bernard & Betty Halpern
William & Robin Halpern
Howard & Sara Harris
Mr. Stuart Harris
Mr. Heitner
Molly Heitner
Mr. Robert Henderson
Alan & Laurie Hirschman
Richard Hirshberg
Jill Hoffman
William Hoffman
Thomas Holber & Linda Safyan
Thomas & Marsha Holcomb
Mr. & Mrs. Larry Holtzman
Mr. & Mrs. David Holzer
Retta Horelick & Lee Horelick
Jerold & Carol Horn
Stanley & Reva Horn
Dr. Emil Horowitz
Dr. & Mrs. Zola Horovitz
David & Teddi Horvitz
Mark & Rhonda Horvitz
Evan & Adrienne Indianer
Janice Israel & Betty Taylor
Ann Izenon
Nada Jacobs
Gary & Susan Jacobson
Dennis Jett & Lynda Schuster
Natalie Josephs
Richard & Rhoda Judd
Steve Kahn & Stephen Kahn
Earl & Barbara Kaiserman
Charles & Susan Kalson
Falk & Judy Kantor

Mr. & Mrs. Naum Kats
Flora Lee Katz
Gary Katzman
Clarice Katz
Carole Kaufman
Dr. & Mrs. Brad Keller
Annie Kenny
Eugene & Lois Kessler
Anatoly & Anna Kharitonov
Mikael & Susan Kimelman
Sandra Kitman
Judith Klarfeld
Mrs. Natalie Kleinberg
Richard & Debra Klein
Gerald Kobell & Judy Kornblith Kobell
Joel & Nancy Kobert
Adam Kolko & Eydie Moses-Kolko
Linda Koski
Elliott & Bobbee Kramer
Judy Kramer
Mr. & Mrs. Herbert Kramer
Carl Krasik
Rachel Krasnow
James & Sheri Krell
Mr. & Mrs. Daniel Krifcher
Dorita Krifcher
Naum & Alla Krinberg
Harriet N. Kruman
Ann Laaff
Mrs. Anita Laborwit
Mr. Robert Lang
Ms. Sally Lapiduss
Richard & Stephanie Lappen
Duane & Jacqueline Larson
Daniel & Lori Laskaris
Bruce Lazarus
Hillard & Joan Lazarus
Mrs. Racille Lazar
Beverly Lebovitz
Mr. James Lebovitz
Mark & Christy Lebovitz
Mrs. Carol Lederer
Jocelyn Lehman
Yaier & Lori Lehrer
Jay Leipzig
Dr. Harold Lenchner
Dr. & Mrs. Harry Lever
Jan & Margaretha Levinson
William & Stacy Levin
Charilee Reinhardt Levy
Mr. & Mrs. Marc Liebman
Penina Lieber
Yuriy & Malvina Linkov
Mr. Sanford Lipsitz
Susan Lipsitz
Robert & Celia Liss
Robert & Marlene Litman
Howard Louik
Charles Love

Alan & Judy Maglin
Jack Malvin
Reid Malvin
Dr. & Mrs. David Mandell
Mr. Larry Mandel
Allan & Helene Manela
Richard & Karen Mann
David Marcovsky
Ms. Rachel Marcus
Dr. & Mrs. Richard S. Margolis
Sandra Margolis
Dr. Barry & Mrs. Martha Markovitz
Judith Marks
Elisa Marlin
Richard & Zipporah Mazer
Michael & Ann McDonough
Barbara Sachnoff Mendlowitz
Gerald & Lynn Mendelbaum
Herbert & Donna Mendelsohn
Mr. and Mrs. Jack Mennis
Nancy Merenstein
Mrs. Toby Pollock Meshberg
Dr. & Mrs. Herbert Meyers
Jack & Bernice Meyers
Mrs. Polina Mezhebovska
Michael Werner & Sari Miller
Mr. & Mrs. Howard Milstein
Marsha Mintz
Abby Morrison
Bunny Morris
Harriet Moses
Mr. & Mrs. Herbert M. Moses
Barry & Sharon Moskowitz
Rona F. Mustin
Larry & Therese Naimark
Dolores Naimark
Susan Nathan
David & Lynetta Neft
Gail Neft
Dr. & Mrs. Lee Neiman
Ronald & Toby Neufeld
Barbara Newman
Daniel Nizhner
Mrs. Judy O'Connor
Janice Ortenberg
Murray Osofsky
Eva Ostrakovna
Mr. & Mrs. Lawrence Paper
Beth Paransky
Mr. Stephen Parker
Eric Begole & Deanna Pasekoff
Carol Pearlman
Ms. Harriet Perlman
Janice Pilch
Joel & Marcia Platt
Helene Pretter
Yakov Prizant & Luba Dolinsky
Dr. Ellen Quick
Ruchlya Rabinovich

OUR CONGREGATIONAL FAMILY

Yahrzeit Donations

November 1, 2021 — January 31, 2022

William & Nancy Rackoff
Aviva Radbord
Lucy Raizman
Arthur Goldberg & Renee Ramo
Mr. & Mrs. Zelik Ratchkauskas
Marilyn Rattner
Mr. & Mrs. Howard Reicher
Richard & Barbara Reisner
Esther Resnick
Paul & Jean Reznick
Dr. Arnold Robbins
Sarah Robbins
Mrs. Judith Robinson
Perry & Nancy Rofey
Nathan & Ferne Rogow
Bruce & Jane Rollman
Ayala Rosen
Mr. & Mrs. Jack Rosen
Mr. & Mrs. Jeffrey Rosenthal
Mr. & Mrs. Eric Rosen
Dr. Mitchell B. Rosenfeld
Paul & Shereen Rosenberg
Robert & Elizabeth Rosenthal
Sidney & Wilma Rosen
Ralph & Dolores Roskies
Alvin Ross & Christine Powers
Mr. Adam S. Rothaus
Debra Roth
Elliot & Martha Rothman
Dr. Daniel & Mrs. Simone Rubin
Joel Rubin
James & Louisa Rudolph
Ms. Arlene Sablowsky
Judah Samet
Goldie Samuels
Marjorie Samuels
Steven Santman
Mrs. Elaine Savage
Carl & Roni Schiffman
Lillian Schoem
Rebecca Schorin
Mr. & Mrs. Robert Schutte
Dr. Alan C. Schwartz
Howard & Marce Schwartz
James & Judith Schwartz
Mr. M.A. Schwartz
Steven & Sharon Schwartz
Eric & Sheila Scott
Mr. Frederick Segal
Barbara Seinfeld
Mrs. Norma Rae Shadoan
Mr. & Mrs. Daniel H. Shapira
Ms. Karen K. Shapiro

Paul & Karen Shapiro
Herbert & Barbara Shear
Neal & Maria Shenderovich
Lois Sherry
Mark & Vera Sherman
Raisa Shilovitsky
Dr. Harvey Shipkovitz
Bernard Shire
Mr. Mark J. Shire
Mr. Alexander Shklyar
Jeff Shore
Ms. Mindy Shreve
Nancy Shuman
Michael & Galina Shurin
Brian & Rachel Siegel
H. Michael & Ellen Siegel
Saundra Siegel
Richard & Mary Silk
Ada Silverberg
June Silverman
Ralph & Audrey Silverman
Scott & Ruth Silverman
Steve Silverman
Mrs. Cynthia Simon
Mr. & Mrs. Elliott Simon
Larry Simon
Howard & Joyce Simons
Mark & Diane Simon
Meyer & Evelyn Simon
Nancy Simon & Jane Hiller
Robert Simon
Mrs. Elaine Siskind
Ben G. Sissman
Mr. Gennady Skotnevsky & Mrs. Raisa Sukharchuk
David Slesnick & Gerri Sperling
Joyce Slotnick
Brad & Lynne Smith
Harold & Connie Smolar
Ms. Sharon Snider
Ms. Stephanie Snyder
Gerald & Paula Sokolow
Melvin & Marcia Solomon
Sidney Somers
John Spear
John Spiegel & Adi Rapport
Marcia Sokolow Spitz
Ms. Ahuva Stadtlander
Ms. Dalia Stadtlander
Jack Stadtlander
Yvonne & Barry Stein
Bernard Stein
Howard Stein & Deborah Swartz
Jay & Jessy Stein

Mrs. Jean Stein
Kenneth & Terry Steinberg
Steve & Lanoma Stein
Randall & Sally Stello
Barry Stern
Gertrude Supowitz
Martin & Linda Supowitz
Mr. & Mrs. Edward S. Tables
Ruth Tanur
Mrs. Anita Taylor
Dr. & Mrs. Barry Tenenouser
Ellen Toker
David & Susan Topolsky
Mr. David Trager
Gary & Nancy Tuckfelt
Mr. Steven & Ms. Jo-Ann Tuckfelt
Ralph & Barbara Vogel
Stanley & Helene Weiner
Mark & Bari Weinberger
Mr. Tedd H. Wein
Mr. Bernard Weiss
Ms. Julie Heldman
Edward & Sharyn Weiss
Jim & Barbara Weiser
Louis & Amy Weiss
Ms. Patricia Weiss
William & Rhonda Weisberger
Steven & Elise Weitz
Robert Whitman
Mr. and Mrs. Roger Wilk
Jack Wilner
Mr. Steven Winkler
Brenda Winsberg
Mr. Mark E. Wise
Lonnie & Natalie Wolf
Mr. Barry J Wolk
Dr. Michael & Mrs. Barbara Wollman
Bernard & Sandra Wortzman
Judy Light Yaillen
Mr. & Mrs. Fred Young
Mr. & Mrs. Howard Young
Susan Young
Mr. & Mrs. Yevgeniy Yuger
Polina Yurkovetsky
Mr. Perry Zalevsky
Sanford & Elinor Zaremborg
Allan & Myrna Zelenitz
Dr. Marvin & Kathleen Zekowitz
Barbara Kann
Edwin & Mildred Zinman
Mrs. Saul Zisman
Marion Zlotnik

Virtual Kiddush Sponsors

November 1, 2021 — January 31, 2022

November 6, 2021

sponsored by **Gil Schneider** in memory of his maternal grandmother Feygal Rivkah Nydick Meltzer.

November 13, 2021

sponsored by **the Congregation** in honor of Lonnie Wolf.

November 27, 2021

sponsored by **Bunny Morris** in honor of the marriage of her grandchildren Dean & Melanie Raskin.

December 4, 2021

sponsored by **the Arnold H. Lazarus and Belle G. Lazarus Annual Remembrance Fund** honoring the memory of Arnold H. Lazarus (z"l) and Belle G. Lazarus (z"l).

December 11, 2021

sponsored by **Aaron & Liz Smuckler** in honor of their son Benjiro becoming a bar mitzvah.

January 29, 2022

sponsored by **Tammy Hepps** in honor of all the *oskei b'tsorkhei tsibbur* who are keeping our services going during this challenging period.

Nihum Avelim

(Comforting Mourners)

November 1, 2021 — January 31, 2022

Lisa Schlar & Alan Finkelstein on the passing of Lisa's mother Avis Judith Schlar on November 3, 2021.

Joel Smalley on the passing of his wife Judy Feldstein Smalley, on November 13, 2021
Condolences also to niece **Mindy Shreve**.

Tsiona Blitstein and Yona Saul on the passing of their older sister Shoshana Gadasi, on November 18, 2021, in Israel.

Martin Gaynor on the passing of his mother Elaine Gaynor, on November 19, 2021, in California.

The family of Miriam "Mimi" Ginsberg, who passed away on Friday, December 3, 2021.

Ed & Kathy Friedman, on the passing of Ed's mother, Beverly Friedman, on Monday, December 6, 2021, the last day of Hanukkah.

Milton & Shirley Estner, on the passing of Milton's brother Seymour on December 13, 2021.

Rabbi Jonathan Perlman (Beth Kissileff), on the passing of his mother Marla Perlman on December 21, 2021.

Ruth Fauman-Fichman and Mark Fichman, on the passing of her brother David Aaron Fauman on January 24, 2022.

Milestones – *Mazal Tov!*

November 1, 2021 — January 31, 2022

Joe Jolson & Sabina Robinson on the birth of granddaughter Reyna Francesca Amodeo to parents Ilana Jolson and Dan Amodeo of Rockville, MD. Reyna was born on October 28th weighing 5 lbs., 13 oz., 19" long. She is named after Joe's mother, Ruth Rose Jolson, and Dan's grandmother, Frances Davidson.

Stuart Silverman on the marriage of his daughter Emily to Tyler Vandervalk. Mazal Tov also to grandparents, Ralph & Audrey Silverman.

Bunny Morris on the marriage of her grandson Dean Raskin to Melanie Eitel.

OUR CONGREGATIONAL FAMILY

Cheryl Blumenfeld, Harold Blumenfeld & Sheryl Riddle on the marriage of their son Brandon Michael Blumenfeld to Cassandra Maria Malis, in Michigan on October 30th.

Cheryl Blumenfeld, Harold Blumenfeld & Sheryl Riddle on the recent engagement of their daughter Morgen to Ryan Vibbert. The Columbus couple plans a 2023 wedding.

Drs. Joseph & Toby Trompeter on son Nicholas receiving his Ph.D. in Biomedical Engineering from the University of Delaware. Nicholas is the third of their children to achieve a doctorate.

Yale and Barbara Rosenstein on the birth of their great-granddaughter, Aidel Miriam, named in memory of her maternal great-great grandmother, Adele Miriam Freed. Parents are Shoshana and Doniel Zimmerman of Israel. Grandfather is Rabbi Yaakov (James) Rosenstein and grandmother is Rochel Zlatkin Rosenstein.

Hilary (Director of ELC) & Justin Yeckel on the birth of a son, Jacob Adam Yeckel, on November 13, 2021, 4:09 a.m., weighing 8 lbs. 5 oz., and 20" long.

Ria David & Mark Perlin on the wedding in Chicago on November 20, 2021, of their son Ariel Perlin to Elliana Kahn, daughter of Lori & Mitch Kahn.

David Sufrin & Diane Samuels on their wedding, on November 21, 2021.

Ilyssa Manspeizer & Brian Cohen on the birth of their first grandchild! He is a boy, weighing in at 7 lbs. 3 oz.. Parents are Jacob & Emily Cohen in Liverpool, England. Grandparents, aunts and uncles in Pittsburgh: Manspeizer-Cohen family (Brian, Ilyssa, Tal, Gili, and Ori). Grandparents, aunts, and uncles in London: Deaner family (Sharon, Andrew, Ben, Victoria, and Amir).

The **Beth Shalom members** who have been named Pittsburgh Jewish Chronicle 2021 Volunteers of the Year: David Horvitz, for Congregation Beth Shalom; Glenn Harlow, for Beth Hamedrash Hagodol-Beth Jacob Congregation; Aviva Lubowsky, for Community Day School; Cindy Goodman-Leib and Scott Leib, for Jewish Federation of Greater Pittsburgh; Ellen Kessler, for Jewish Healthcare Foundation; Elaine Beck, for National Council of Jewish Women; Evan H. Stein, for Pittsburgh Jewish Chronicle.

Judy Kobell and Ira Frank on being honored by the National ZOA as "Zionists in the Spotlight" representing Pittsburgh.

New grandparents **Paul & Avi Baran Munro** (their first grandkid!) and great-grandfather **Moshe Baran** on the birth of Florence Malka Munro, born December 29, 2021, in San Francisco, to Emily Silverman & Boaz Munro. "Flory" weighed in at 8 lbs. 2 oz., 20" long.

Grandparents **Steve & Sharon Schwartz** on the birth of their first granddaughter, Ava Rose, born January 7, 2022, daughter of Marla & Ben Pourrabbani of Los Angeles.

Mimi & Jack Halpern on the engagement of their grandson Andrew Zeiger, son of Howard & Ilene Zeiger of California, to Jennifer Sachs, daughter of Howard & Trish Sachs of Maryland. Both are medical students at Thomas Jefferson Medical School in Philadelphia. They plan a November 2022 wedding.

Micah Jacobs who will be honored January 29th by Community Day School as Volunteer of the Year for sharing his time and expertise to help CDS navigate safely through the COVID-19 pandemic.

Chani & Amitai Bin-Nun on the birth of a baby girl on Friday night, January 21st.

Virtual Third Meal Sponsors

November 1, 2021 — January 31, 2022

November 6, 2021

sponsored by **David Sufrin & Diane Samuels** in memory of David's father Adolph Sufrin.

November 13, 2021

sponsored by **Sanford & Elinor and Robbie Zaremborg** in memory of beloved parents/grandparents Sara T. & Robert Davidson and Ruth & Samuel Zaremborg and sister/aunt Lea E. Davidson.

November 27, 2021

sponsored by **Brenda Kurland and Dorothy Baker Kurland** in memory of Samuel Kurland and Sylvia Baker.

December 4, 2021

sponsored by **Rich & Helen Feder** in memory of Richard's father, Milton Feder.

December 11, 2021

sponsored by **Karen Valeri** in loving memory of her mother, Ruth Ganz Fargotstein, on her third yahrzeit.

December 18, 2021

sponsored by **Mindy Shreve, Bobby, Danny, & Bella Bress** in memory of beloved father and grandfather Kenneth Bress.

January 1, 2022

sponsored by **Anonymous**.

January 15, 2022

sponsored by **Gail Neft** in loving memory of Richard Callet.

January 22, 2022

sponsored by **Nate & Debby Firestone** in honor of Bunny Morris.

January 29, 2022

sponsored by **David & Teddi, Bruce & Deborah, and Mark & Rhonda Horvitz** in loving memory of their father, Robert Horvitz.

Shabbat Kiddush Sponsorship

We are seeking sponsors for our Shabbat Kiddushes. All of the monies raised will be used to cover the cost of the food. Please help us reach our goal.



If you are able to sponsor a kiddush, please contact Ira Frank at

412-849-2937 or
natfabira@juno.com.

OUR CONGREGATIONAL FAMILY

Check out the full list of Congregation Beth Shalom endowment and funds.

You can donate to any ones of these funds.

Donate online at bethshalompgh.org/general-donations

Operations Endowment

Providing long-term support for synagogue operations

Rabbi Adelson Discretionary Fund

Supporting Rabbi Adelson's Philanthropic Ideals

Mildred & Isadore Berkowitz Memorial Fund

Supporting synagogue operations

Beth Shalom Judaic Museum Fund

Providing funds for Judaic Museum purchases

Bregman Minyan Endowment

Supporting morning minyan social activities

Cemetery Endowment

Providing cemetery maintenance

Hertz & Etz Chaim Chumashim Fund

Purchasing of Chumashim

Andrew & Minnie Cohen Operations Fund

Supporting synagogue operations

Reuben A. & Selma W. Cohen Youth Endowment

Supporting Youth Department activities

Harry & Jean Davis Operations Endowment

Supporting synagogue operations

Max Elinoff Youth Scholarship Fund

Supporting Beth Shalom youth welfare

J. Leonard Frank Early Morning Minyan Endowment

Supporting Shabbat and Yom Tov services

Goldberg Religious School Endowment

Financing Shabbat & family programs for Religious School (J-JEP)

Lynda Herer Goldsmith Camp Ramah Fund

Funding scholarships for youth members in need

Lillian & Leo Gross Sisterhood Keshet Fund

Underwriting Keshet annual cost

Bernard & Ethel Halpern Young

Leadership Award

Paying the expenses associated with the Halpern Young Leadership award.

Lillian Halpern JTS Weekend Lectureship Endowment

Bringing Seminary students to Beth Shalom for shabbat weekend

Morris Henderson Yahrzeit Fund

Supporting synagogue operations

Hoffman Library Fund

Establishing and maintaining the Hoffman Library

Israel Experience Scholarship Fund

Funding scholarships for dependent children of Congregants to offset costs for trip to Israel

Allan & Betsy Kanarek Shabbat Alive Endowment

Offering programming for Shabbat Alive events

Joan & Larry Lasday Memorial Education Fund

Assisting deserving youth of Synagogue members

Mark Lasser Memorial Scholarship Fund

Providing an annual scholarship to enable an Israel experience for a member in need

Darrell H. Lazarus Hear O Israel Fund

Providing hearing devices for those who are hearing impaired

Arnold H. Lazarus & Belle G. Lazarus Endowment

Supporting synagogue operations

Arnold H. Lazarus & Belle G. Lazarus Annual Remembrance Fund

Providing funding for annual kiddush honoring Belle and Arnold Lazarus

Bessie & Aaron Maharam Education Endowment

Providing books and other educational materials for preschool

OUR CONGREGATIONAL FAMILY

Ma'ot Hittin Donation Fund

Supporting people in need during Passover

Mazeroov Scholarship Endowment

Providing scholarship support for children of
Beth Shalom members

Moscov Scholarship Fund

Providing scholarship support for Preschool students

Preschool Enrichment Fund

Supporting preschool programming

Philanthropic Fund

Supporting charitable causes as defined by the
Philanthropic Committee

Prayer Book Fund

Providing funds to purchase New Prayer Books

Preschool Scholarship Fund

Providing scholarship support for Preschool students

Lynne Robins Memorial Scholarship Endowment

Providing First-time Israel travel support for
young female members

Rose K. & Harry Rosen Confirmation Class Endowment

Financing education programs and activities

Thomas Mordechai Rosenstein Memorial Fund

Supporting synagogue operations

Delores Rubin Memorial Fund

Supporting synagogue operations

Schiffman Music Fund

Supporting music programming

Arlene Shapiro Memorial Fund

Supporting synagogue operations

Samuel T. & Jeannette B. Shear Youth Lounge Endowment

Establishing and maintaining youth lounge

Sisterhood Flower Fund

Providing flowers for the Bima & our Rabbis for the
High Holidays

Sisterhood Torah Cover Endowment

Purchasing of Torah Cover in honor of every
Congregation President

Sigel-Mandel-Cohen Scholar in Residence Shulabration Endowment

Supporting Scholar-in-Residence Program

Albert & Anita Smolover Scholarship Fund

Supporting Preschool operations

Pearl & William Stark Humanities Library Fund

Establishing and maintaining the Starks
Humanities Library

Harry Steck Primary Enrichment Endowment Fund

Providing books and other educational materials for
Religious School Enrichment

Taubé Endowment Fund

Supporting synagogue operations

Early Childhood TEACH Fund

Supporting Professional Development of our
Preschool Staff

Wagner-Klein Preschool Playground Fund

Maintaining and replacing Preschool playground
equipment

Alvin and Shirley Weinberg Preschool Scholarship Fund

Providing scholarship support for Preschool students

Youth Fund

Supporting youth programming

Zukerman Sukkot Endowment

Providing Sukkot decorations and kiddushes and
Sukkah construction/repair

Zweig Library Fund

Establishing and maintaining the Zweig Library

Samuel & Mollie Zytnick Endowment

Supports synagogue operations

STAFF DIRECTORY

Please reference this directory for professional leadership contact information.

We look forward to speaking with you!

OFFICE HOURS: Monday - Thursday, 8:00 am - 5:00 pm and Friday, 8:00 am - 3:00 pm*
* Staff schedules vary



Rabbi Seth Adelson
Senior Rabbi
412.421.2288 x115
rav@bethshalompgh.org



Michelle Vines
Events Coordinator
412.421.2288 x113
catering1@bethshalompgh.org



Robert Gleiberman
Executive Director
412.421.2288 x226
ExecDir@bethshalompgh.org



Kristin Zappone
Marketing & Communications Specialist
412.421.2288 x108
communications@bethshalompgh.org



Dale Caprara
Controller
412.421.2288 x109
controller@bethshalompgh.org



Audrey Glickman
Rabbi's Assistant
412.421.2288 x112
rabbiasst@bethshalompgh.org



Rabbi Andy Shugerman
Development Director
412.421.2288 x 317
rabbiandy@bethshalompgh.org



Tika Bonner
Administrative Assistant
412.421.2288 x114
receptionist@bethshalompgh.org



Rabbi Mark Asher Goodman
Interim Director of Derekh & Junior Congregation
412.421.2288 x111
mgoodman@bethshalompgh.org



Pamela Stasolla
Assistant Director of the ELC
412-421-8857 x390
pstasolla@bethshalompgh.org



Rabbi Larry Freedman
Director of J-JEP
412.621.6566 x116
rabbiLF@jjep.org



Kate Kim
Assistant Director of J-JEP
412.621.6566 x111
kate@jjep.org



Hilary Yeckel
Director of the ELC
412.421.2288 x290
Hyeckel@bethshalompgh.org



Amira Walker
Bookkeeper
412.421.2288 x110
accounting@bethshalompgh.org



Marissa Tait
Director of Youth Programming
412.421.2288 x463
mtait@bethshalompgh.org



John Williams
Maintenance Supervisor
412-973-9964
maintenance@bethshalompgh.org

ELEGANT — EDGE

CATERING
CO.

*Passover begins April 15.
Don't forget to order.
Complete menu details to follow.*

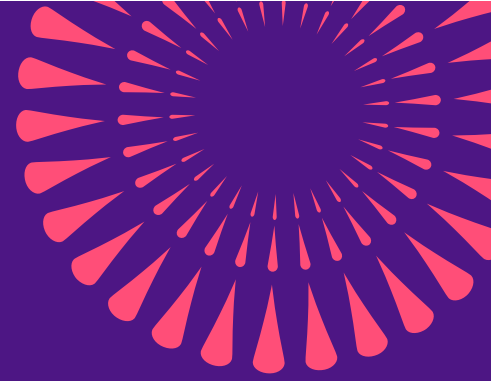
EEdgeCatering.com

**Follow us on Facebook
@Elegantedgecateringcompany**

**Office Phone: 412-385-2332
Email: info@eedgecatering.com**



PURIM 2022



WEDNESDAY, MARCH 16

SCHEDULE OF EVENTS



6:30 P.M. - 7:15 P.M.

KIDS PROGRAM

(CARNIVAL ENTERTAINERS)

SAMUEL & MINNIE HYMAN BALLROOM

7:00 P.M.

MINHAH/MA'ARIV

FAYE RUBENSTEIN WEISS SANCTUARY AND ZOOM

7:20 P.M.

READING BEGINS

(KID'S COSTUME PARADE, SONGS & ACTIVITIES)

FAYE RUBENSTEIN WEISS SANCTUARY AND ZOOM

8:30 P.M.

READING CONCLUDES

(AWARDS GIVEN FOR ADULT COSTUMES)

FAYE RUBENSTEIN WEISS SANCTUARY
AND ZOOM



COVID protocols must be followed.

Visit BethShalomPgh.org/Religious-Services for updated COVID protocols.